



# Tools for Turning Mill

**N1~N26**

# N



**Tools for Turning Mill** **N2~N18**

<b>Polygon Taper Shank KPC Series</b>	<b>N2</b>
<b>HSK-T (ICTM Standard) Tooling</b>	<b>N10</b>

**Quick Change System** **N19~N20**

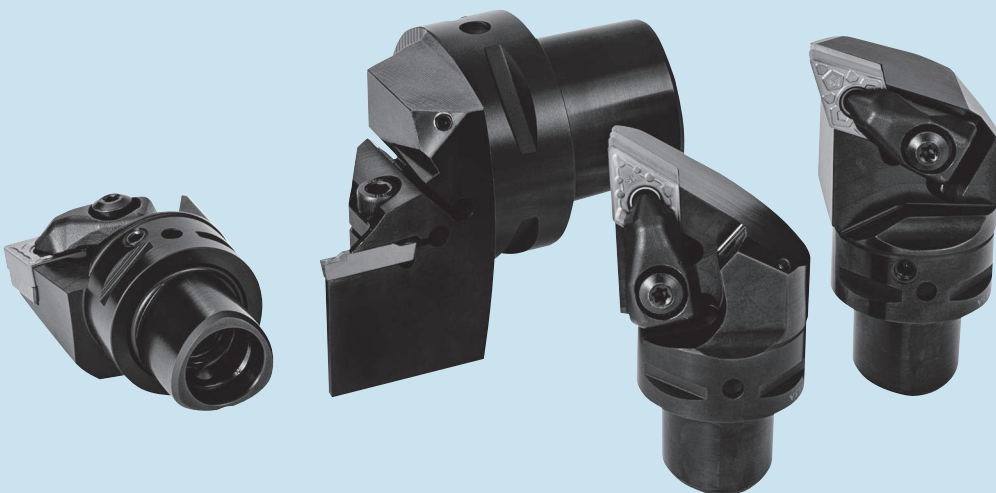
<b>KQC</b>	Petal-shaped adapter	<b>N19</b>
------------	----------------------	------------

**Cartridge** **N21~N24**

<b>Lever Lock</b>	PS□□ / PT□□	<b>N22</b>
<b>Top Clamp</b>	CT□□	<b>N23</b>
<b>Screw Clamp</b>	ST□□	<b>N24</b>

**Flange holder For Back Facing** **N25~N26**

**Parts Compatibility of Lever Lock Toolholders** **R52**



# Polygon Taper Shank

## Polygon Taper Shank

PSC Shank Tools

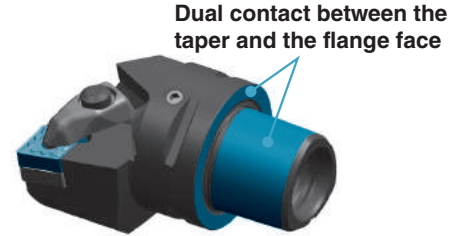
JIS B 6066-1

ISO26623-1 Polygonal taper interface with flange contact surface

### Features

#### 1 High Rigidity

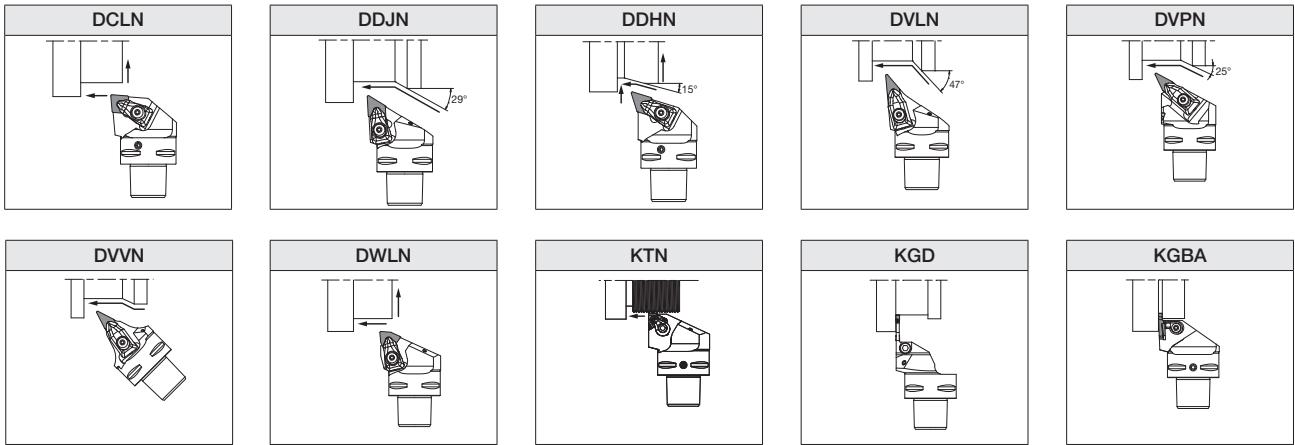
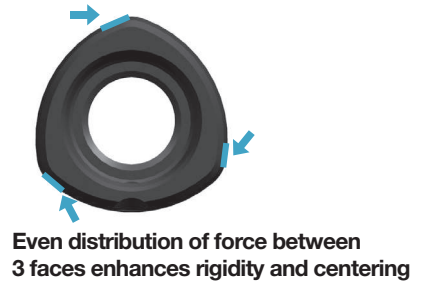
Polygon taper design and dual contact between the taper and the flange face for high rigidity



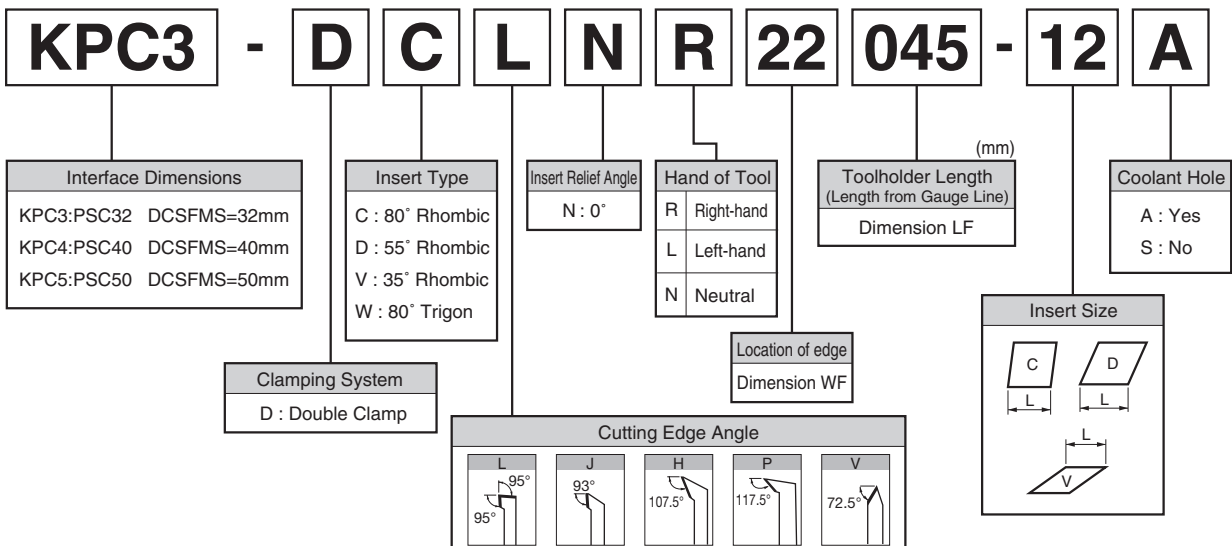
#### 2 High Precision

Locational accuracy within  $\pm 2\mu\text{m}$

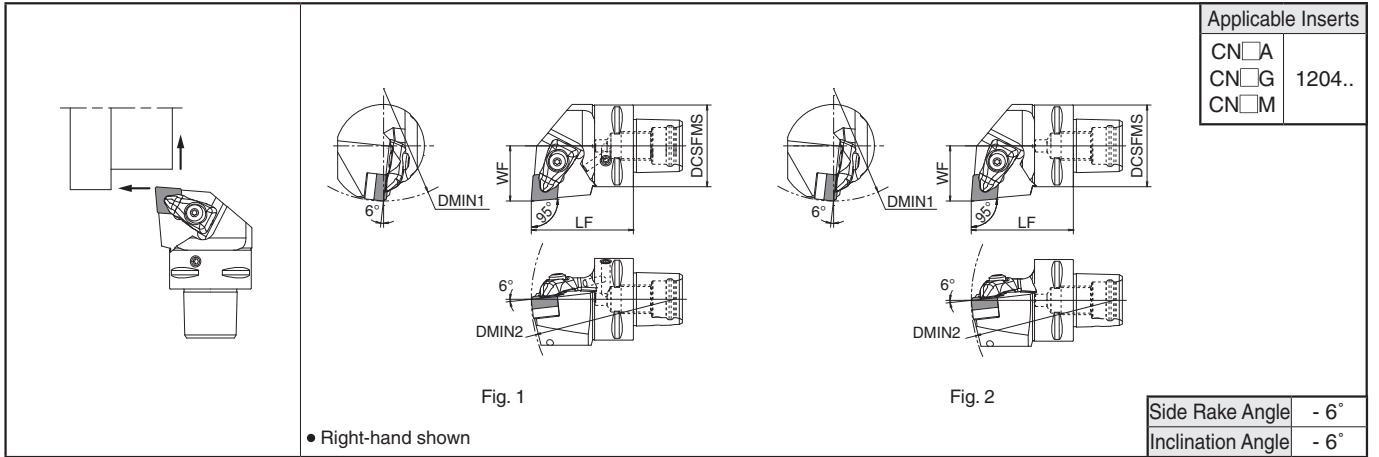
Distributes cutting forces evenly between 3 faces for enhanced rigidity and centering accuracy



### Identification System (External)



# DCLN (External / Facing)



● Right-hand shown

Side Rake Angle	- 6°
Inclination Angle	- 6°

## ● Toolholder Dimensions

Description	Stock		Coolant Hole	Dimension (mm)					Std. Corner-R(RE)	Drawing	Spare Parts					
	R	L		DCSFMS	LF	WF	DMIN1	DMIN2			Clamp	Screw	Spring	Shim	Shim Screw	Wrench
<b>KPC3-DCLN<sup>®</sup>/L 22045-12A</b>	●	●	Yes	32	45	22	60	121	0.8	Fig. 1	CP-3D-S	CS-3D-TR	SP-3D	SP-441P	M3X8	FT-15
<b>KPC4-DCLN<sup>®</sup>/L 27050-12A</b>	●	●		40	50	27	110	140						DC-44	SB-4085TR	
<b>KPC5-DCLN<sup>®</sup>/L 35060-12A</b>	●	●		50	60	35	110	165						(*3 DC-44-C)		
<b>KPC3-DCLN<sup>®</sup>/L 22045-12S</b>	●	●	No	32	45	22	60	121	0.8	Fig. 2	CP-3D-S	CS-3D-TR	SP-3D	SP-441P	M3X8	FT-15
<b>KPC4-DCLN<sup>®</sup>/L 27050-12S</b>	●	●		40	50	27	110	140						DC-44	SB-4085TR	
<b>KPC5-DCLN<sup>®</sup>/L 35060-12S</b>	●	●		50	60	35	110	165						(*3 DC-44-C)		

\*1 Pressure Resistance: Up to 7 MPa

\*2 When using inserts whose corner-R(RE) is greater than 1.2mm, it could be necessary additional modifications on the toolholder or the shim in order to prevent interfere with workpiece.

\*3 When using the inserts with SX chipbreaker, prepare a shim separately.

\*4 Recommended tightening torque 3.9N·m

# Polygon Taper Shank

## DDJN (External / Copying)

**Applicable Inserts**  
 DN  A 1504..  
 DN  G (1506..  
 DN  M

Side Rake Angle - 6°  
 Inclination Angle - 7°

• Right-hand shown

### Toolholder Dimensions

Description	Stock		Coolant Hole	Dimension (mm)					Std. Corner-R(RE)	Drawing	Spare Parts					
	R	L		DCSFMS	LF	WF	DMIN1	DMIN2			Clamp	Screw	Spring	Shim	Shim Screw	Wrench
KPC3-DDJN <sup>1/2</sup> 22050-15A	●	●	Yes	32	50	22	110	121	0.8	Fig. 1	CP-3D-S	CS-3D-TR	SP-3D	DD-44 (*3 DD-43)	SB-4085TR	FT-15
KPC4-DDJN <sup>1/2</sup> 27055-15A	●	●		40	55	27	110	145			CP-3D-S	CS-3D-TR	SP-3D	DD-44 (*3 DD-43)	SB-4085TR	FT-15
KPC5-DDJN <sup>1/2</sup> 35060-15A	●	●		50	60	35	110	165			CP-3D-S	CS-3D-TR	SP-3D	DD-44 (*3 DD-43)	SB-4085TR	FT-15
KPC3-DDJN <sup>1/2</sup> 22050-15S	●	●	No	32	50	22	110	121	0.8	Fig. 2	CP-3D-S	CS-3D-TR	SP-3D	DD-44 (*3 DD-43)	SB-4085TR	FT-15
KPC4-DDJN <sup>1/2</sup> 27055-15S	●	●		40	55	27	110	145			CP-3D-S	CS-3D-TR	SP-3D	DD-44 (*3 DD-43)	SB-4085TR	FT-15
KPC5-DDJN <sup>1/2</sup> 35060-15S	●	●		50	60	35	110	165			CP-3D-S	CS-3D-TR	SP-3D	DD-44 (*3 DD-43)	SB-4085TR	FT-15

\*1 Pressure Resistance: Up to 7 MPa

\*2 When using inserts whose corner-R(RE) is greater than 1.2mm, it could be necessary additional modifications on the toolholder or the shim in order to prevent interfere with workpiece.

\*3 Shims indicated within brackets ( ) are not included with the toolholder. To change insert thickness, please purchase it separately.

\*4 Recommended tightening torque 3.9N·m

## DDHN (External / Facing / Copying)

**Applicable Inserts**  
 DN  A 1504..  
 DN  G (1506..  
 DN  M

Side Rake Angle - 6°  
 Inclination Angle - 6°

• Right-hand shown

### Toolholder Dimensions

Description	Stock		Coolant Hole	Dimension (mm)					Std. Corner-R(RE)	Drawing	Spare Parts					
	R	L		DCSFMS	LF	WF	DMIN1	DMIN2			Clamp	Screw	Spring	Shim	Shim Screw	Wrench
KPC3-DDHN <sup>1/2</sup> 22050-15A	●	●	Yes	32	50	22	110	121	0.8	Fig. 1	CP-3D-S	CS-3D-TR	SP-3D	DD-44 (*3 DD-43)	SB-4085TR	FT-15
KPC4-DDHN <sup>1/2</sup> 27055-15A	●	●		40	55	27	110	145			CP-3D-S	CS-3D-TR	SP-3D	DD-44 (*3 DD-43)	SB-4085TR	FT-15
KPC5-DDHN <sup>1/2</sup> 35060-15A	●	●		50	60	35	110	165			CP-3D-S	CS-3D-TR	SP-3D	DD-44 (*3 DD-43)	SB-4085TR	FT-15
KPC3-DDHN <sup>1/2</sup> 22050-15S	●	●	No	32	50	22	110	121	0.8	Fig. 2	CP-3D-S	CS-3D-TR	SP-3D	DD-44 (*3 DD-43)	SB-4085TR	FT-15
KPC4-DDHN <sup>1/2</sup> 27055-15S	●	●		40	55	27	110	145			CP-3D-S	CS-3D-TR	SP-3D	DD-44 (*3 DD-43)	SB-4085TR	FT-15
KPC5-DDHN <sup>1/2</sup> 35060-15S	●	●		50	60	35	110	165			CP-3D-S	CS-3D-TR	SP-3D	DD-44 (*3 DD-43)	SB-4085TR	FT-15

\*1 Pressure Resistance: Up to 7 MPa

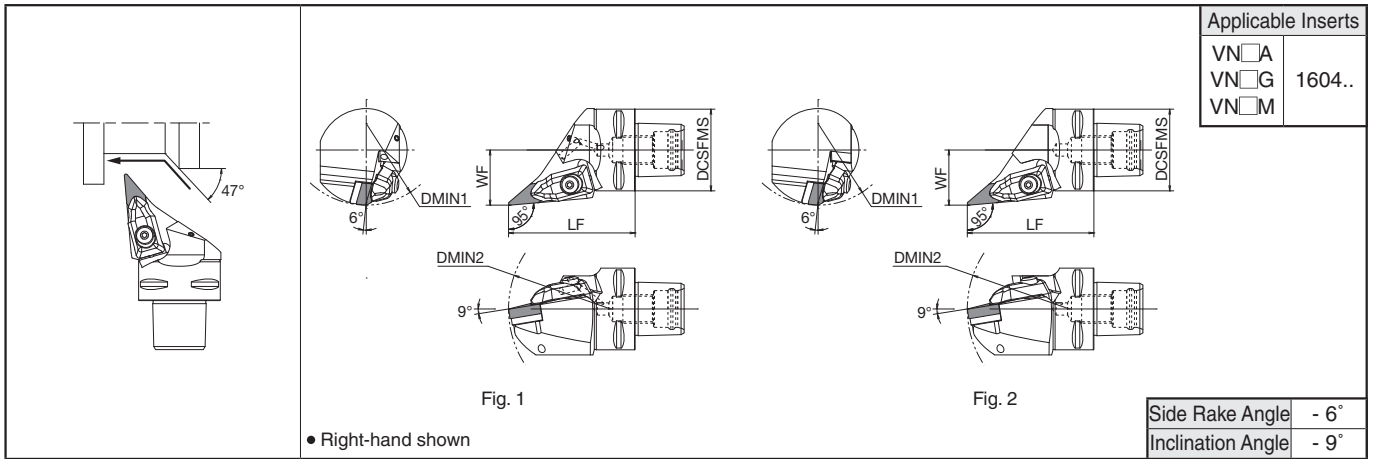
\*2 When using inserts whose corner-R(RE) is greater than 1.2mm, it could be necessary additional modifications on the toolholder or the shim in order to prevent interfere with workpiece.

\*3 Shims indicated within brackets ( ) are not included with the toolholder. To change insert thickness, please purchase it separately.

\*4 Recommended tightening torque 3.9N·m

● : Std. Item

## DVLN (External / Copying)



### Toolholder Dimensions

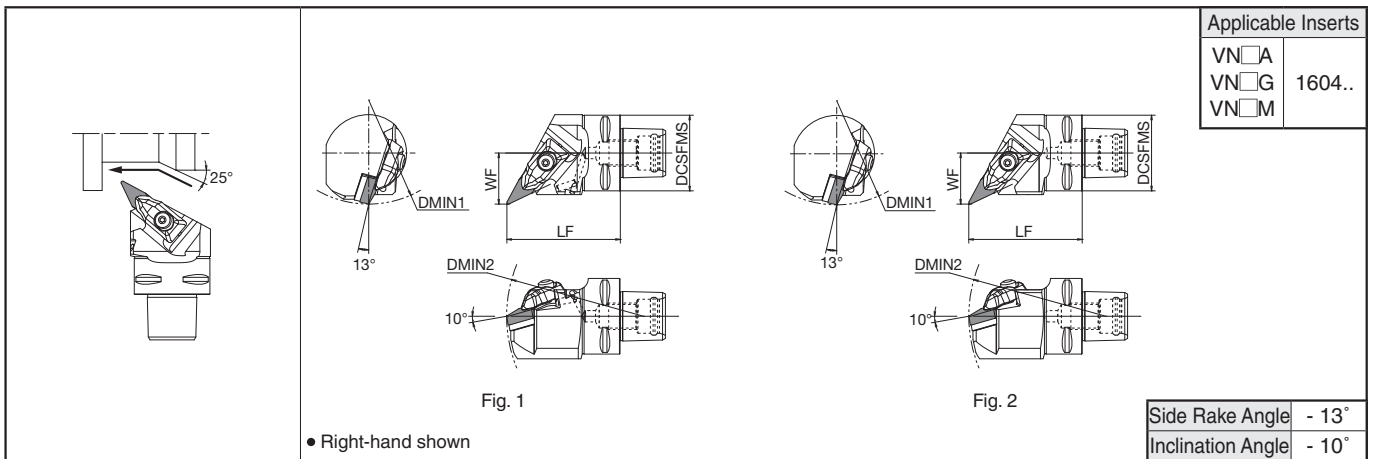
Description	Stock		Coolant Hole	Dimension (mm)					Std. Corner-R(RE)	Drawing	Spare Parts					
	R	L		DCSFMS	LF	WF	DMIN1	DMIN2			Clamp	Screw	Spring	Shim	Shim Screw	Wrench
KPC3-DVLN <sup>R/L</sup> 22058-16A	●	●		32	58	22	80	100	0.8	Fig. 1	CP-5D-S	CS-3D-TR	SP-3D	DV-33	SB-4085TR	FT-15
KPC4-DVLN <sup>R/L</sup> 27062-16A	●	●	Yes	40	62	27	80	100								
KPC5-DVLN <sup>R/L</sup> 35065-16A	●	●		50	65	35	80	100								
KPC3-DVLN <sup>R/L</sup> 22058-16S	●	●		32	58	22	80	100	0.8	Fig. 2	CP-5D-S	CS-3D-TR	SP-3D	DV-33	SB-4085TR	FT-15
KPC4-DVLN <sup>R/L</sup> 27062-16S	●	●	No	40	62	27	80	100								
KPC5-DVLN <sup>R/L</sup> 35065-16S	●	●		50	65	35	80	100								

\*1 Pressure Resistance: Up to 7 MPa

\*2 When using inserts whose corner-R(RE) is greater than 1.2mm, it could be necessary additional modifications on the toolholder or the shim in order to prevent interfere with workpiece.

\*3 Recommended tightening torque 3.9N·m

## DVPN (External / Facing / Copying / Undercutting)



### Toolholder Dimensions

Description	Stock		Coolant Hole	Dimension (mm)					Std. Corner-R(RE)	Drawing	Spare Parts					
	R	L		DCSFMS	LF	WF	DMIN1	DMIN2			Clamp	Screw	Spring	Shim	Shim Screw	Wrench
KPC3-DVPN <sup>R/L</sup> 22055-16A	●	●		32	55	22	110	130	0.8	Fig. 1	CP-5D-S	CS-3D-TR	SP-3D	DV-33	SB-4085TR	FT-15
KPC4-DVPN <sup>R/L</sup> 27060-16A	●	●	Yes	40	60	27	110	145								
KPC5-DVPN <sup>R/L</sup> 35065-16A	●	●		50	65	35	110	165								
KPC3-DVPN <sup>R/L</sup> 22055-16S	●	●		32	55	22	110	130	0.8	Fig. 2	CP-5D-S	CS-3D-TR	SP-3D	DV-33	SB-4085TR	FT-15
KPC4-DVPN <sup>R/L</sup> 27060-16S	●	●	No	40	60	27	110	145								
KPC5-DVPN <sup>R/L</sup> 35065-16S	●	●		50	65	35	110	165								

\*1 Pressure Resistance: Up to 7 MPa

\*2 When using inserts whose corner-R(RE) is greater than 1.2mm, it could be necessary additional modifications on the toolholder or the shim in order to prevent interfere with workpiece.

\*3 Recommended tightening torque 3.9N·m

● : Std. Item

Insert Grades  
Turnable  
Indexable Inserts  
CN & PCD Tools  
External  
Small Parts  
Machining  
Boring  
Grooving  
Cut-off  
Threading  
Drilling  
Solid Tools  
Milling  
Tools for Turning Mill  
Spare Parts  
Technical Information  
Index

A  
B  
C  
D  
E  
F  
G  
H  
J  
K  
L  
M  
N  
P  
R  
T

# Polygon Taper Shank

## DVVN (External / Copying)

Applicable Inserts

VN□A	1604..
VN□G	
VN□M	

Back Rake Angle	- 11°
-----------------	-------

### Toolholder Dimensions

Description	Stock			Coolant Hole	Dimension (mm)						Std. Corner-R(RE)	Drawing	Spare Parts					
	R	N	L		DCSFMS	LF	WF	*3 B1 (°)	*3 B2 (°)	DMIN2			Clamp	Screw	Spring	Shim	Shim Screw	Wrench
KPC4-DVVNN 00062-16A	●			Yes	40	62	0	61	63	152	0.8	Fig. 1	CP-5D-S	CS-3D-TR	SP-3D	DV-33	SB-4085TR	FT-15
KPC5-DVVNN 00065-16A	●			Yes	50	65	0	59	59	170								
KPC3-DVVNN 00058-16S	●			No	32	58	0	68	68	140								
KPC4-DVVNN 00062-16S	●			No	40	62	0	61	63	152	0.8	Fig. 2	CP-5D-S	CS-3D-TR	SP-3D	DV-33	SB-4085TR	FT-15
KPC5-DVVNN 00065-16S	●			No	50	65	0	59	59	170								

\*1 Pressure Resistance: Up to 7 MPa

\*2 When using inserts whose corner-R(RE) is greater than 1.2mm, it could be necessary additional modifications on the toolholder or the shim in order to prevent interfere with workpiece.

\*3 Angle B1 and B2 show the interference angle from the line of cutting edge and toolholder.

## DWLN (External / Facing)

Applicable Inserts

WN□A	0804..
WN□G	
WN□M	

Side Rake Angle	- 6°
Inclination Angle	- 6°

● Right-hand shown

### Toolholder Dimensions

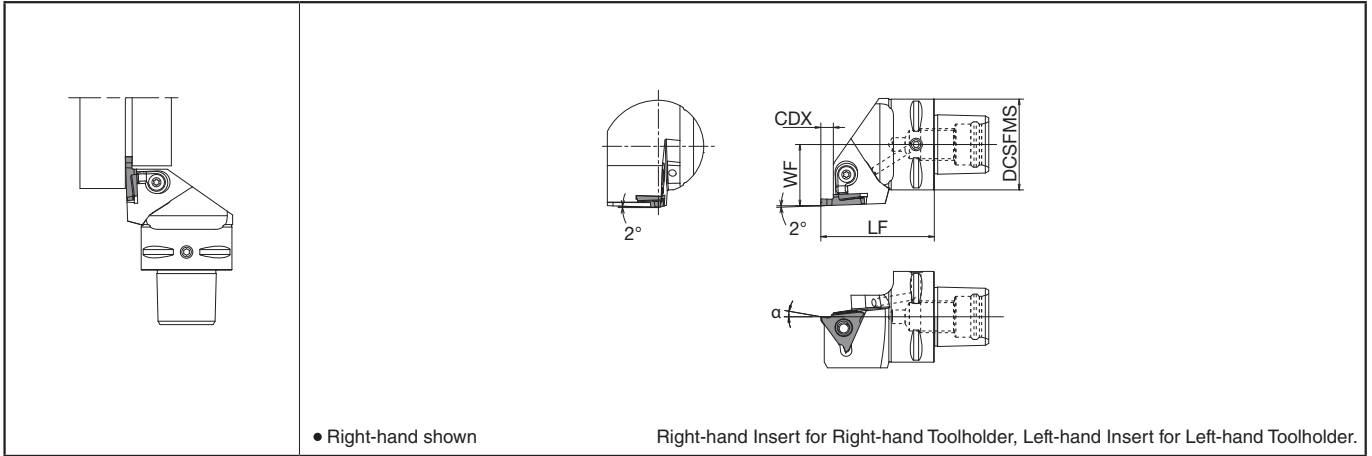
Description	Stock		Coolant Hole	Dimension (mm)					Std. Corner-R(RE)	Drawing	Spare Parts					
	R	L		DCSFMS	LF	WF	DMIN1	DMIN2			Clamp	Screw	Spring	Shim	Shim Screw	Wrench
KPC3-DWLN <sup>1)</sup> 22047-08A	●	●		32	47	22	110	121								
KPC4-DWLN <sup>1)</sup> 27050-08A	●	●	Yes	40	50	27	110	140	0.8	Fig. 1	CP-3D-S	CS-3D-TR	SP-3D	DW-42	SB-4085TR	FT-15
KPC5-DWLN <sup>1)</sup> 35060-08A	●	●		50	60	35	110	165								
KPC3-DWLN <sup>1)</sup> 22047-08S	●	●	No	32	47	22	110	121								
KPC4-DWLN <sup>1)</sup> 27050-08S	●	●	No	40	50	27	110	140	0.8	Fig. 2	CP-3D-S	CS-3D-TR	SP-3D	DW-42	SB-4085TR	FT-15
KPC5-DWLN <sup>1)</sup> 35060-08S	●	●	No	50	60	35	110	165								

\*1 Pressure Resistance: Up to 7 MPa

\*2 Recommended tightening torque 3.9N·m

● : Std. Item

# KGBA (External Shallow Grooving Toolholders)



## Toolholder Dimensions

Description	Stock		Coolant Hole	Dimension (mm)				Spare Parts		Applicable Inserts ● G6~G8
	R	L		DCSFMS	LF	WF	CDX	Clamp Set	Wrench	
KPC3-KGBA <sup>1/2</sup> 22040-16	●	●	Yes	32	40	22	2.5	LGBA-16 <sup>1/2</sup> S	FT-15	GBA32 <sup>1/2</sup> type
KPC4-KGBA <sup>1/2</sup> 27050-16	●	●		40	50	27				
KPC5-KGBA <sup>1/2</sup> 35060-16	●	●		50	60	35				
KPC3-KGBA <sup>1/2</sup> 22040-2215	●	●	Yes	32	40	22	4.0	LGBA-22 <sup>1/2</sup> S	FT-15	GBA43 <sup>1/2</sup> type
KPC4-KGBA <sup>1/2</sup> 27050-2215	●	●		40	50	27				
KPC5-KGBA <sup>1/2</sup> 35060-2215	●	●		50	60	35				
KPC3-KGBA <sup>1/2</sup> 22040-2225	●	●	Yes	32	40	22	5.5	LGBA-22 <sup>1/2</sup> S	FT-15	GBA43 <sup>1/2</sup> type
KPC4-KGBA <sup>1/2</sup> 27050-2225	●	●		40	50	27				
KPC5-KGBA <sup>1/2</sup> 35060-2225	●	●		50	60	35				
KPC3-KGBA <sup>1/2</sup> 22040-2235	●	●	Yes	32	40	22	5.5	LGBA-22 <sup>1/2</sup> S	FT-15	GBA43 <sup>1/2</sup> type
KPC4-KGBA <sup>1/2</sup> 27050-2235	●	●		40	50	27				
KPC5-KGBA <sup>1/2</sup> 35060-2235	●	●		50	60	35				

\*1 Pressure Resistance: Up to 7 MPa

\*2 CDX shows the distance from the toolholder to the cutting edge. Available Groove Depth: "CDX" of Insert.

\*3 Clamp Set : LGBA-○○RS for Right-hand Toolholder and LGBA-○○LS for Left-hand Toolholder.

\*4 Rake Angle (α) after Installment of Insert

### Rake Angle (α) after Installment of GBA-GM insert

α	Insert Description
10°	GBA43 <sup>1/2</sup> 150-020GM
15°	GBA43 <sup>1/2</sup> 175-020GM ~ GBA43 <sup>1/2</sup> 265-030GM
12°	GBA43 <sup>1/2</sup> 300-030GM ~ GBA43 <sup>1/2</sup> 400-040GM

α shows the rake angle at the center of the edge width after installing insert

### Rake Angle (α) after Installment of GBA-MY insert

α	Insert Description
15°	GBA43 <sup>1/2</sup> 175-020MY ~ GBA43 <sup>1/2</sup> 350-030MY
14°	GBA43 <sup>1/2</sup> 400-040MY

α shows the rake angle at the center of the edge width after installing insert

### Rake Angle (α) after Installment of GBA insert

GBA32 <sup>1/2</sup> ○○○-○○○		GBA43 <sup>1/2</sup> ○○○-○○○		GBA43 <sup>1/2</sup> ○○○-○○○R (Full-R)	
α	Insert Grades	α	Insert Grades	α	Full-R Description
10°	TN620, TN90, PV7040, PR930 PR1115, PR1215, PR1625, PR905 KPD001, KPD010	0°	KBN510, KBN525	10°	TN620, TN90, PV7040, PR930 PR1115, PR1215, PR1625, PR905
		10°	TN620, TC40N, TN90, PV7040 PR930, PR1115, PR1215, PR1625 PR905, KPD001, KPD010		TN620, TN90, PV7040, PR930 PR1115, PR1215, PR1625, PR905
20°	KW10	20°	KW10	14°	TN620, TN90, PV7040, PR930 PR1115, PR1215, PR1625, PR905
					KW10
					050R ~ 150R
					200R
					050R ~ 200R

● : Std. Item

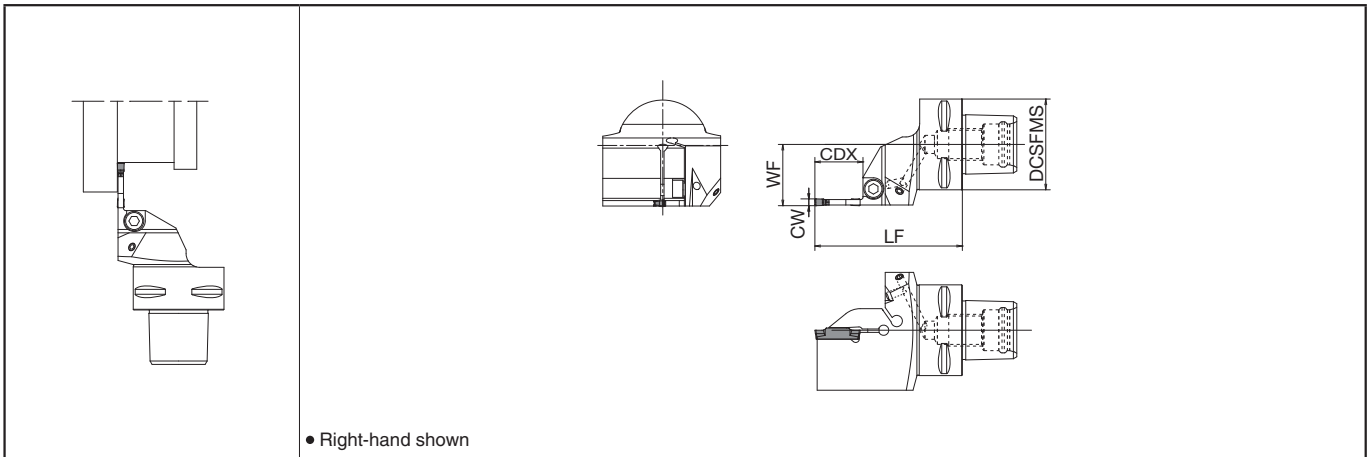
Insert Grades  
Turnable Inserts  
CN & PCD Tools  
External  
Small Parts  
Machining  
Boring  
Grooving  
Cut-off  
Threading  
Drilling  
Solid Tools  
Milling  
Tools for Turning Mill  
Spare Parts  
Technical Information  
Index

A  
B  
C  
D  
E  
F  
G  
H  
J  
K  
L  
M  
N  
P  
R  
T



# Polygon Taper Shank

## KGD (Grooving / Cut-off Toolholders)



### Toolholder Dimensions

Width CW (mm)	Max. depth of cut (mm)	Description	Stock		Coolant Hole	Dimension (mm)				Edge Width W (mm)		Spare Parts		Applicable Inserts G23, G24
			R	L		DCSFMS	LF	WF	CDX	MIN.	MAX.	Screw	Wrench	
2	10	KPC3-KGD <sup>R/L</sup> 22050-2T10	●	●	Yes	32	50	22	10	2.0	3.0	HH5X16	LW-4	GDM type GDG type
		KPC4-KGD <sup>R/L</sup> 27055-2T10	●	●		40	55	27						
		KPC5-KGD <sup>R/L</sup> 35060-2T10	●	●		50	60	35						
	17	KPC3-KGD <sup>R/L</sup> 22055-2T17	●	●		32	55	22	17					
		KPC4-KGD <sup>R/L</sup> 27060-2T17	●	●		40	60	27						
		KPC5-KGD <sup>R/L</sup> 35060-2T17	●	●		50	60	35						
3	10	KPC3-KGD <sup>R/L</sup> 22050-3T10	●	●		32	50	22	10	3.0	4.0			
		KPC4-KGD <sup>R/L</sup> 27055-3T10	●	●		40	55	27						
		KPC5-KGD <sup>R/L</sup> 35060-3T10	●	●		50	60	35						
	20	KPC3-KGD <sup>R/L</sup> 22060-3T20	●	●		32	60	22	20					
		KPC4-KGD <sup>R/L</sup> 27065-3T20	●	●		40	65	27						
		KPC5-KGD <sup>R/L</sup> 35065-3T20	●	●		50	65	35						
4	10	KPC3-KGD <sup>R/L</sup> 22050-4T10	●	●		32	50	22	10	4.0	5.0			
		KPC4-KGD <sup>R/L</sup> 27055-4T10	●	●		40	55	27						
		KPC5-KGD <sup>R/L</sup> 35060-4T10	●	●		50	60	35						
	20	KPC4-KGD <sup>R/L</sup> 27065-4T20	●	●		40	65	27	20					
		KPC5-KGD <sup>R/L</sup> 35065-4T20	●	●		50	65	35						
		25	KPC4-KGD <sup>R/L</sup> 27070-4T25	●		●	40	70						
KPC5-KGD <sup>R/L</sup> 35070-4T25	●		●	50	70	35								
5	10	KPC4-KGD <sup>R/L</sup> 27055-5T10	●	●	40	55	27	10	5.0	6.0				
		KPC5-KGD <sup>R/L</sup> 35060-5T10	●	●	50	60	35							
	17	KPC4-KGD <sup>R/L</sup> 27060-5T17	●	●	40	60	27	17						
		KPC5-KGD <sup>R/L</sup> 35060-5T17	●	●	50	60	35							

\*1 Pressure Resistance: Up to 7 MPa

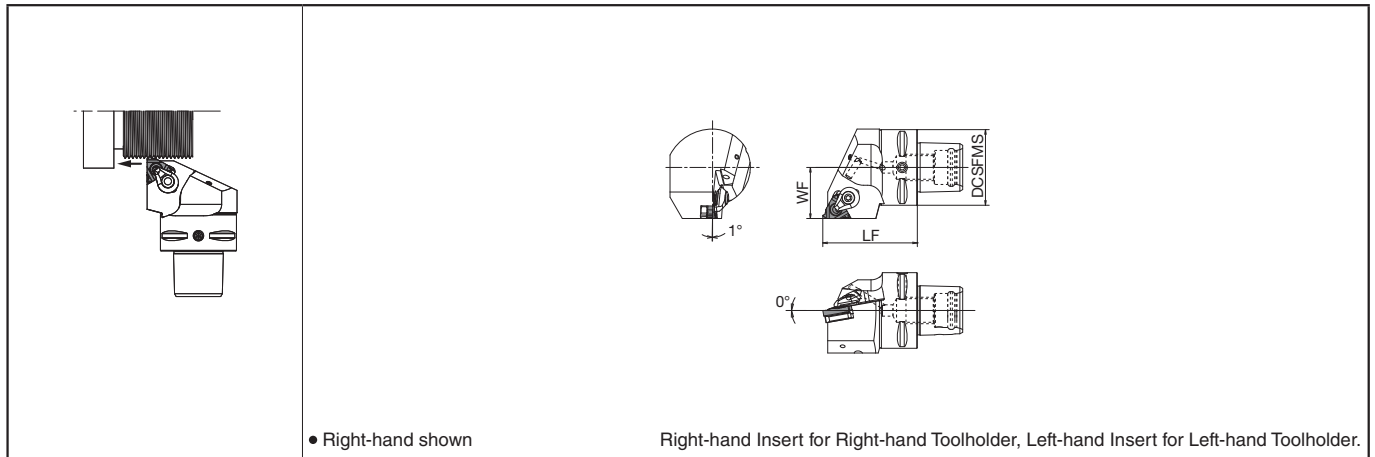
\*2 Recommended tightening torque 6.5N·m

\*3 CDX : Maximum depth to which processing can be made. (If the CDX is 20 mm or more, the maximum groove-depth made by the 2-edge insert will be 18 mm.)


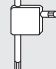


● : Std. Item



## KTN (External Threading Toolholders)



### Toolholder Dimensions

Description	Stock		Coolant Hole	Dimension (mm)			Spare Parts				Applicable Inserts ● J6, J8, J10, J12, J14, J16, J18
	R	L		DCSFMS	LF	WF	Clamp Set	Wrench	Shim	Shim Screw	
											
<b>KPC3-KTN<sup>R/L</sup> 22040-16</b>	●	●	Yes	32	40	22	CPS-5S	FT-15	TN-32	SP3X8	16E <sup>R/L</sup> type
<b>KPC4-KTN<sup>R/L</sup> 27050-16</b>	●	●		40	50	27					
<b>KPC5-KTN<sup>R/L</sup> 35060-16</b>	●	●		50	60	35					

\*1 Pressure Resistance: Up to 7 MPa

● : Std. Item

Insert Grades  
A  
B  
C  
D  
E  
F  
G  
H  
J  
K  
L  
M  
N  
P  
R  
T

Indexable Inserts  
Turning  
CNC & PCO Tools  
External  
Small Parts  
Machining  
Boring  
Grooving  
Cut-off  
Threading  
Drilling  
Solid Tools  
Milling  
Tools for  
Turning Mill  
Spare Parts  
Technical  
Information  
Index

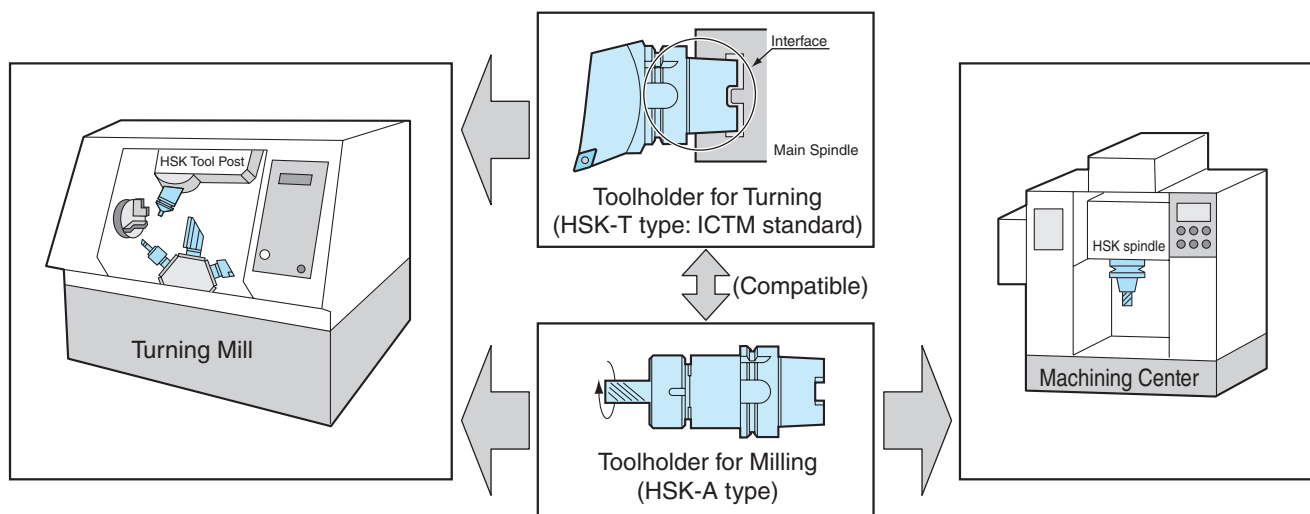
# Tools for Turning Mill (HSK-T)

## Tools for Turning Mill (HSK-T)

- The turning mill is a machine that combines turning and milling functions. Now an interface (between workpiece and toolholder - equivalent to the arbor for milling) is available for the turning mill that fulfils the ICTM standard.
- ICTM standard was developed by 16 companies in Japan, as the interface between turning mill machines. It is based on the two-face restraint type standard "ISO 12164-1:2001 HSK Standard Shank"
- This standard became an International Standard as ISO Standard "ISO12164-3:2008" in 2008. Description is indicated as HSK-T○○○.

### Features

- (1) Compatible with HSK-A type for Machining Center.

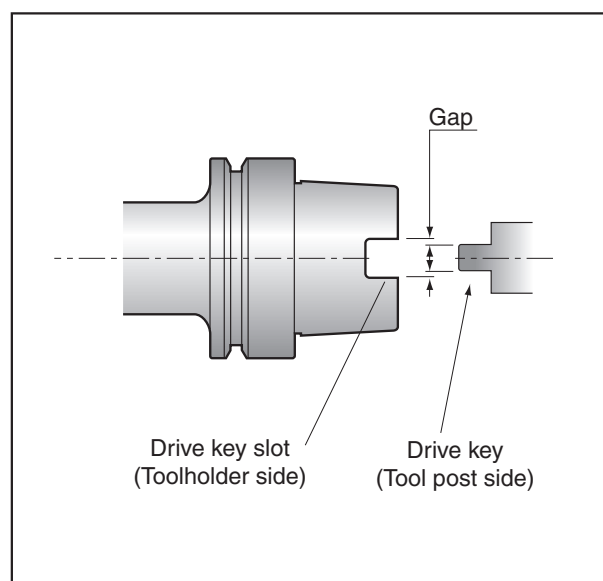


- (2) Machining precision for turning has improved by minimizing the gap between the drive key slot on toolholder side and the drive key on toolpost side.

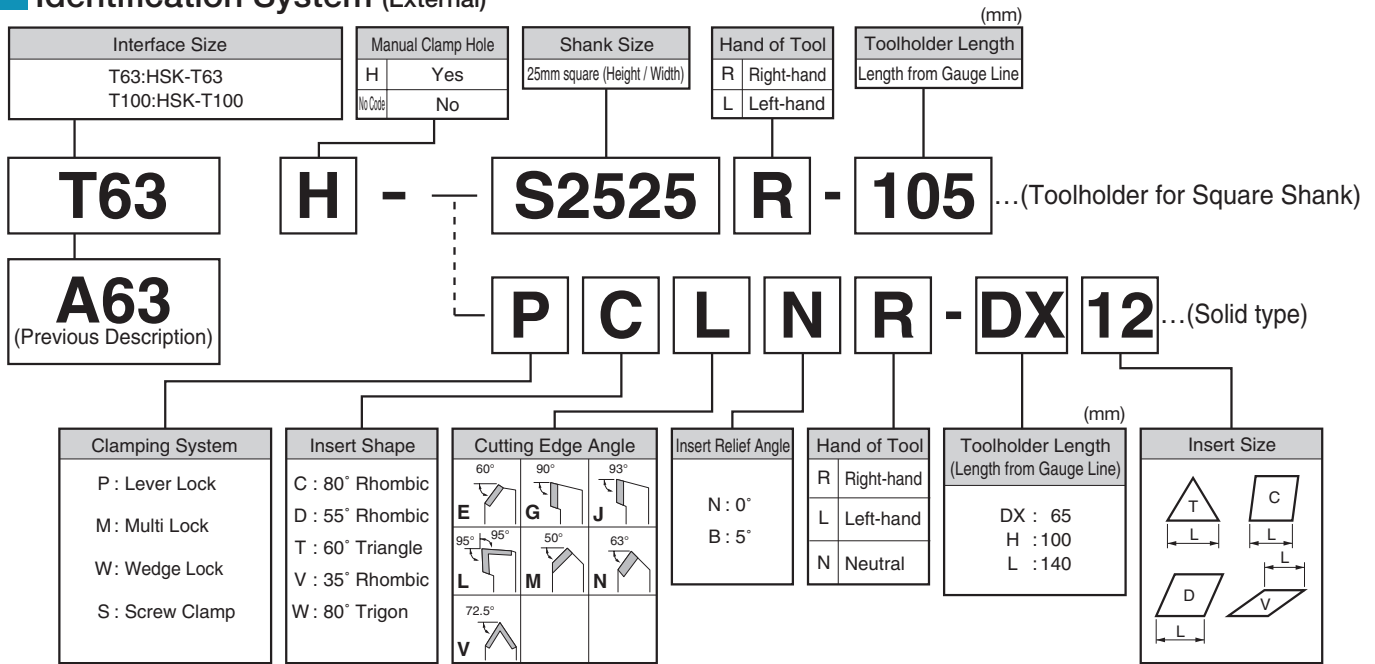
Table 1 Comparison of the gap of a key and key slot  
(Unit : mm)

	12.2	12.3	12.4	12.5	12.6
<b>HSK-A63 Tolerance</b>		12.25	12.35		
		0.10	Min. gap 0.15	0.08	
				12.5	12.58
					Max. gap 0.33
<b>HSK-T63 Tolerance</b>			12.385	12.41	
			0.025		
			Min. gap 0.015	0.035	
			12.425	12.46	
					Max. gap 0.075

Fig. 1 Effect of the gap

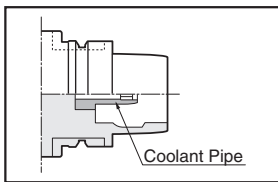


## Identification System (External)

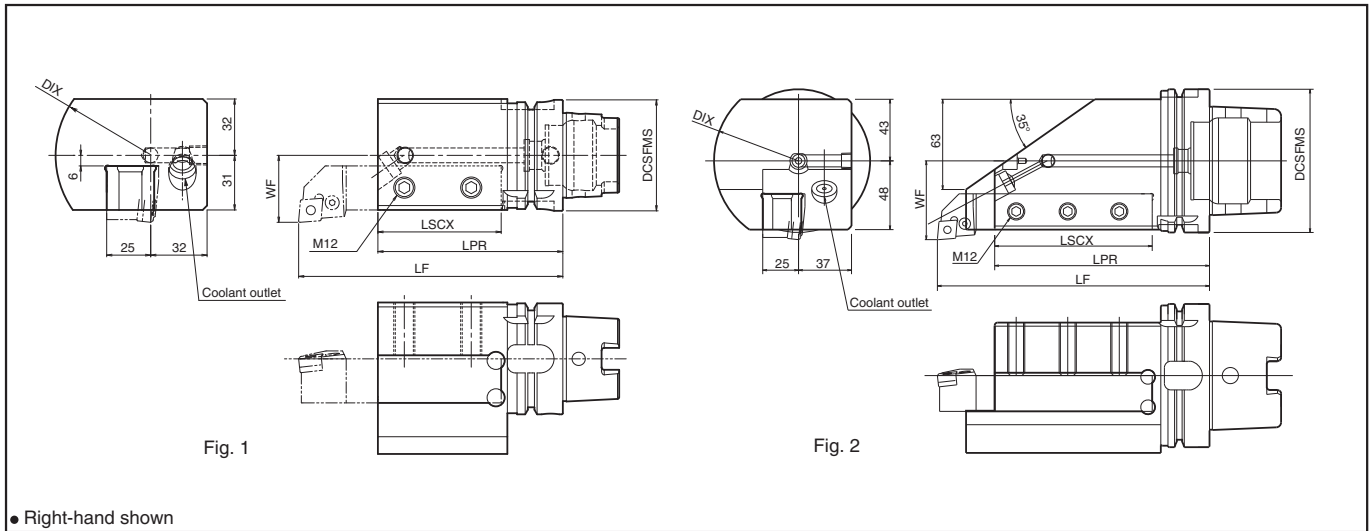


### Coolant Pipe

Coolant pipe is built into toolholder.



## Toolholder for Square Shank (External / Facing)



● Right-hand shown

### Toolholder Dimensions

Description	Stock	Dimension (mm)						Drawing	Spare Parts		
		DCSFMS	DIX	LF	LPR	LSCX	WF		Screw	Wrench	Coolant Pipe
<b>T63H-</b> <b>S2525R-105</b>	●	63	108	150	105	70	38	Fig. 1	HS12X25	LW-6	CL63-1
<b>S2525L-105</b>	●										
<b>T100H-</b> <b>S2525R-150</b>	●	100	118	190	150	110	55	Fig. 2	HS12X30	LW-6	CL100-1
<b>S2525L-150</b>	●										

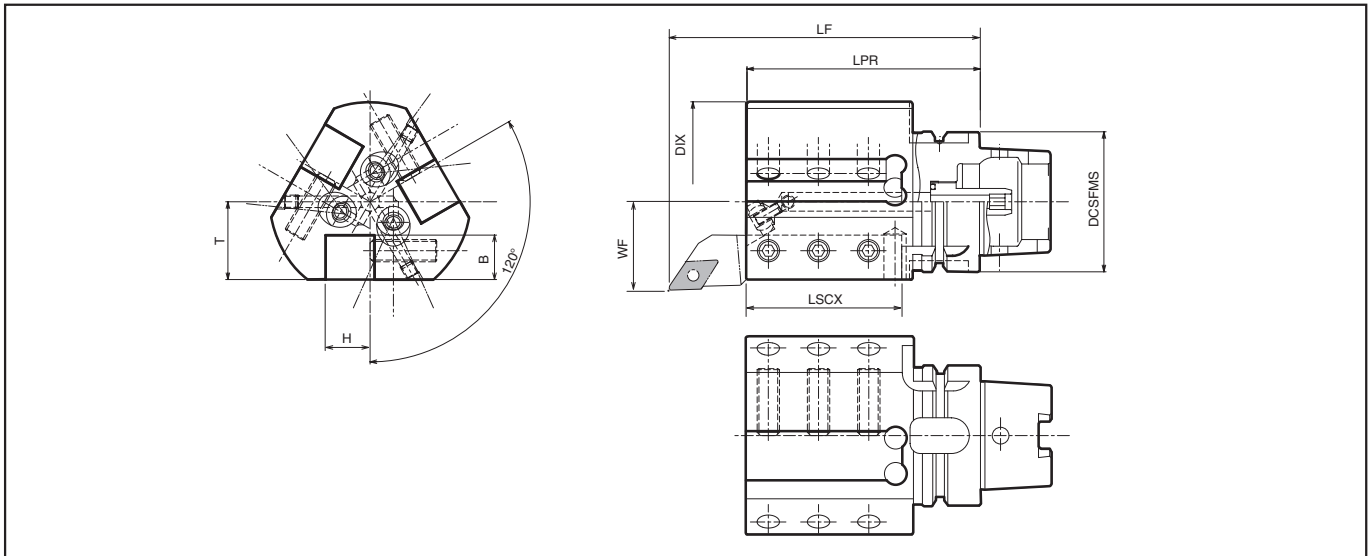
Coolant outlet direction is adjustable.

For 25mm square shank.

● : Std. Item

# Tools for Turning Mill (HSK-T)

## Toolholder for Square Shank (External / Facing)

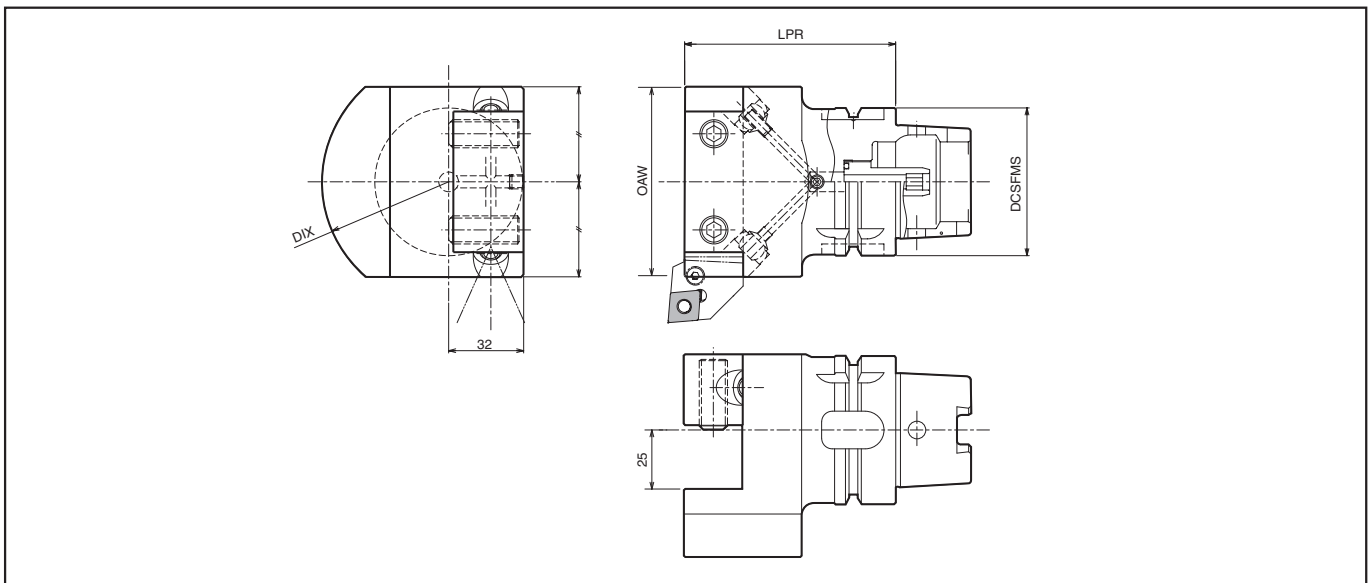


### Toolholder Dimensions

Description	Attachment toolholder Shank Dimension	Stock	Dimension (mm)										Spare Parts		
			DCSFMS	DIX	H	B	T	LF	LPR	LSCX	WF	Screw	Wrench	Coolant Pipe	
<b>T63H- S2020R-105T</b>	(20mm square)	●	63	90	20	20	35	150	105	70	40	HS12X30	LW-6	CL63-1	
<b>T100H- S2525R-150T</b>	(25mm square)	●	100	118	25	25	48	190	150	110	55	HS12X35		CL100-1	

· Coolant outlet direction is adjustable.

## Toolholder for Square Shank (Facing / External)



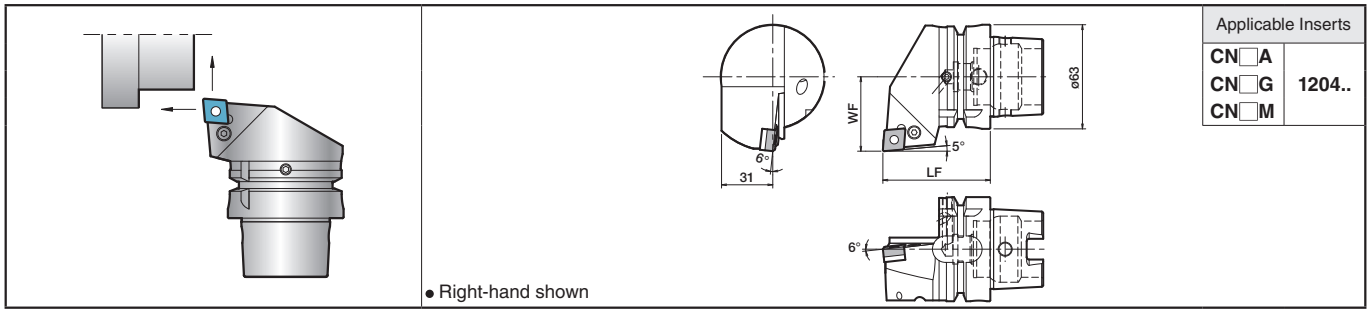
### Toolholder Dimensions

Description	Attachment toolholder Shank Dimension	Stock	Dimension (mm)				Spare Parts		
			DCSFMS	DIX	LPR	OAW	Screw	Wrench	Coolant Pipe
<b>T63H- S2525-90F</b>	(25mm square)	●	63	108	90	81	HS12X30	LW-6	CL63-1
<b>S2525-120F</b>		●			120				
<b>T100H- S2525-105F</b>	(25mm square)	●	100	118	105	96			
<b>S2525-150F</b>		●			150				

· Coolant outlet direction is adjustable.

● : Std. Item

## PCLN (External / Facing)



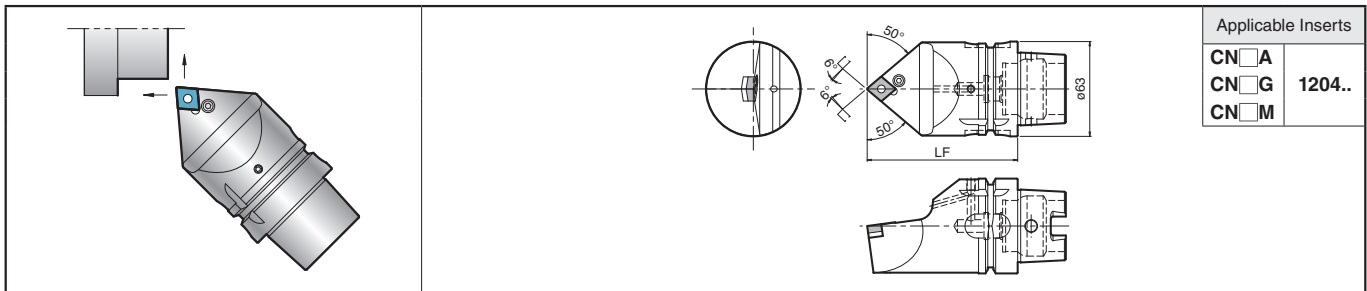
● Right-hand shown

### Toolholder Dimensions

Description	Stock	Dimension (mm)		Spare Parts							
		LF	WF	Lever	Lock Screw	Shim	Shim Pin	Punch	Wrench	Coolant Pipe	
T63H- PCLNR-DX12 PCLNL-DX12	● ●	65	45	LL-2N	LS-2N	LC-42N *LC-42N-C	LSP-2	PC-2	LW-3	CL63-1	

\* When using the inserts with SX chipbreaker, prepare a shim (LC-42N-C) separately.

## PCMN (External / Facing)

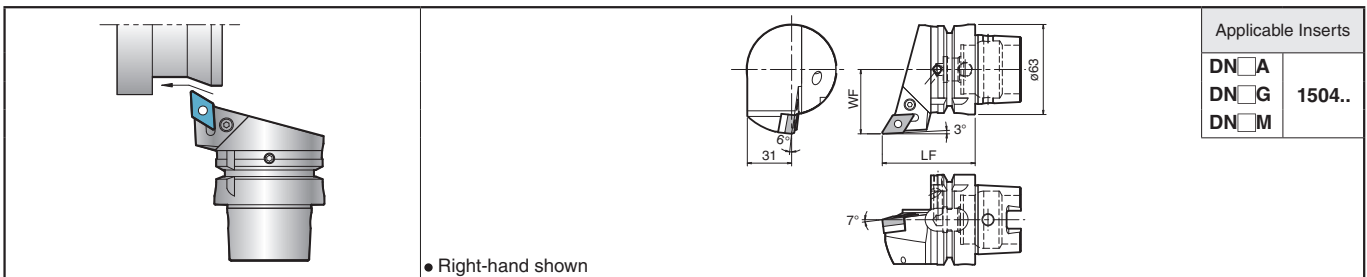


### Toolholder Dimensions

Description	Stock	Dimension (mm)		Spare Parts							
		LF	WF	Lever	Lock Screw	Shim	Shim Pin	Punch	Wrench	Coolant Pipe	
T63H- PCMNN-H12 PCMNN-L12	● ●	100 140		LL-2N	LS-2N	LC-42N *LC-42N-C	LSP-2	PC-2	LW-3	CL63-1	

\* When using the inserts with SX chipbreaker, prepare a shim (LC-42N-C) separately.

## PDJN (External / Copying)



● Right-hand shown

### Toolholder Dimensions

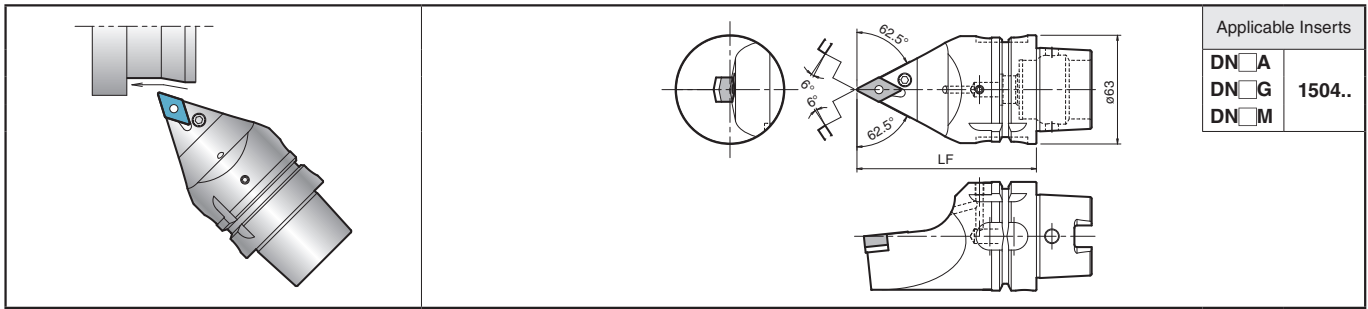
Description	Stock	Dimension (mm)		Spare Parts							
		LF	WF	Lever	Lock Screw	Shim	Shim Pin	Punch	Wrench	Coolant Pipe	
T63H- PDJNR-DX15 PDJNL-DX15	● ●	65	45	LL-3N	LS-2N	LD-42 *LD-42-20	LSP-2	PC-2	LW-3	CL63-1	

\* When using inserts whose corner-R(RE) is greater than 1.6mm, please purchase a shim with \* mark and use it in order to prevent workpiece and shim from interfering each other.

● : Std. Item

# Tools for Turning Mill (HSK-T)

## PDNN (External / Copying)

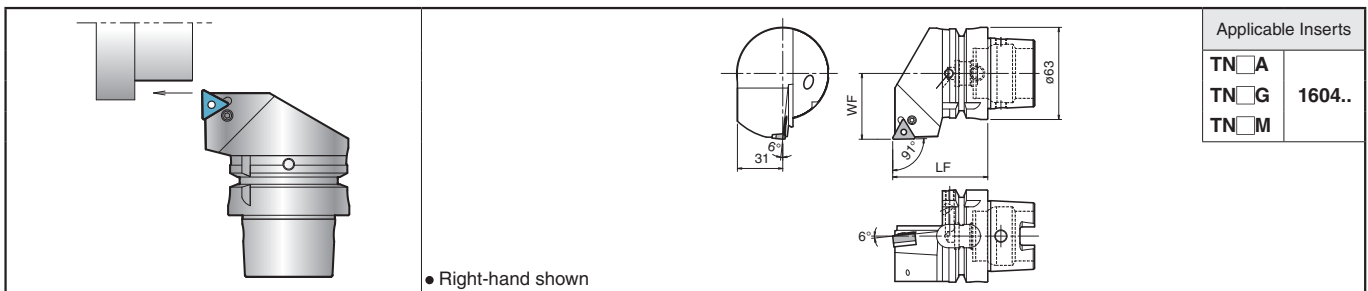


### Toolholder Dimensions

Description	Stock	Dimension (mm)		Spare Parts						
		LF	WF	Lever	Lock Screw	Shim	Shim Pin	Punch	Wrench	Coolant Pipe
T63H- PDNNN-H15	●	100		LL-3N	LS-2N	LD-42	LSP-2	PC-2	LW-3	CL63-1
PDNNN-L15	●	140				*LD-42-20				

· When using inserts whose corner-R(RE) is greater than 1.6mm, please purchase a shim with \* mark and use it in order to prevent workpiece and shim from interfering each other.

## PTGN (External)



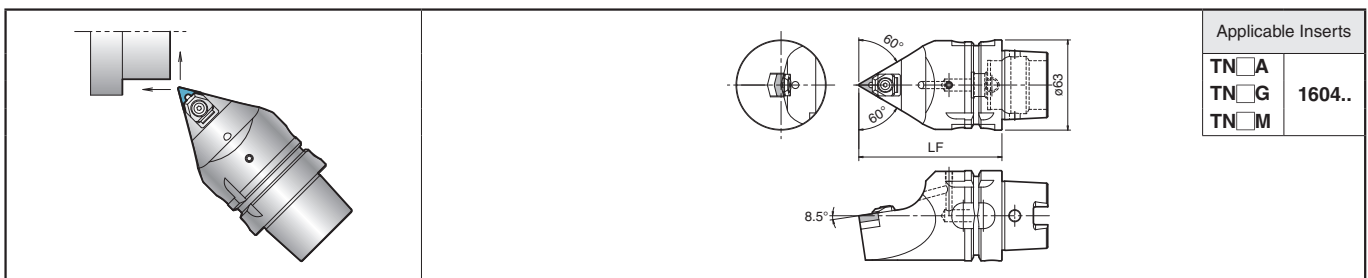
● Right-hand shown

### Toolholder Dimensions

Description	Stock	Dimension (mm)		Spare Parts						
		LF	WF	Lever	Lock Screw	Shim	Shim Pin	Punch	Wrench	Coolant Pipe
T63H- PTGNR-DX16	●	65	45	LL-1N	LS-1N	LT-32N	LSP-1	PC-1	FH-2.5	CL63-1
PTGNL-DX16	●					*LT-32N-20				

· When using inserts whose corner-R(RE) is greater than 1.6mm, please purchase a shim with \* mark and use it in order to prevent workpiece and shim from interfering each other.

## WTEN (External)

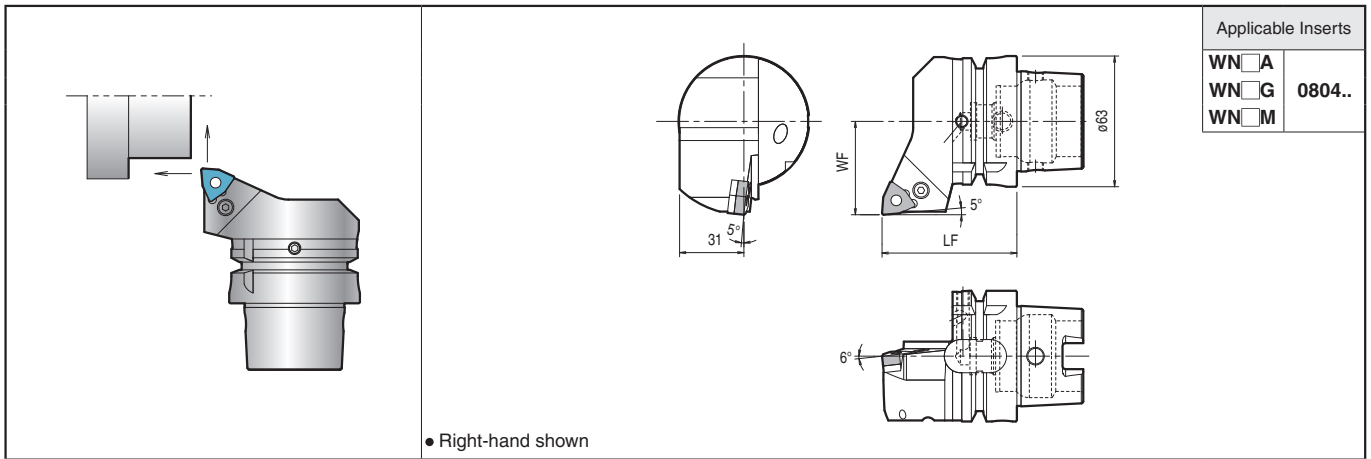


### Toolholder Dimensions

Description	Stock	Dimension (mm)		Spare Parts						
		LF	WF	Clamp Set	Shim	Shim Pin	Shim Nut	Wrench	Spacer	Coolant Pipe
T63H- WTENN-H16	●	100		WCS-1N	WTN-33	WP-1S	WN-1	LW-3	WSP-1	CL63-1
WTENN-L16	●	140								

● : Std. Item

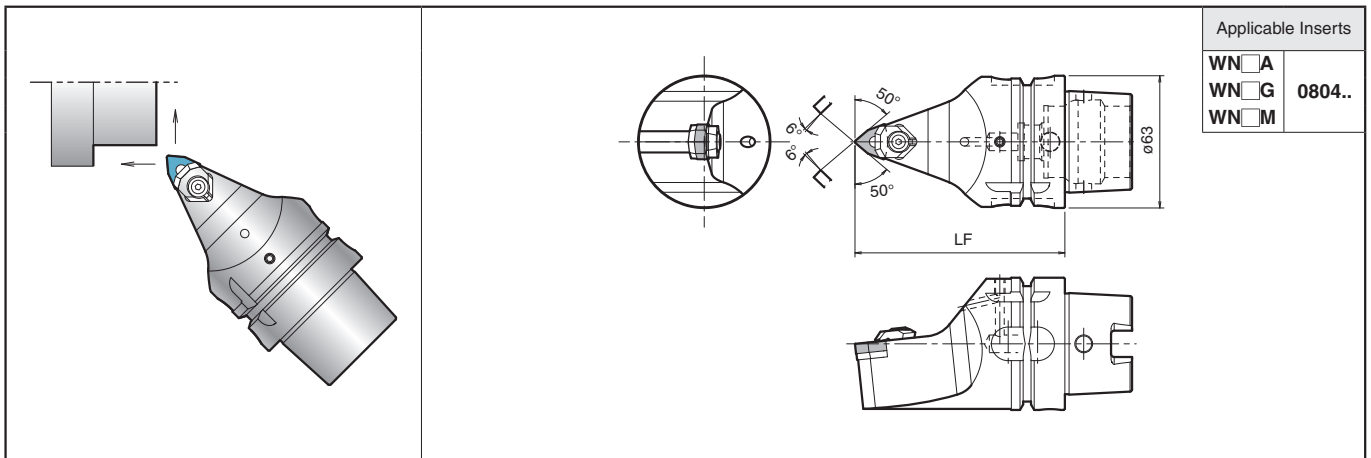
## PWLN (External / Facing)



### Toolholder Dimensions

Description	Stock	Dimension (mm)		Spare Parts						
		LF	WF	Lever	Lock Screw	Shim	Shim Pin	Punch	Wrench	Coolant Pipe
T63H- PWLNR-DX08	●	65	45	LL-2N	LS-2N	LW-42N	LSP-2	PC-2	LW-3	CL63-1
PWLN- PWLNL-DX08	●									

## WWMN (External / Facing)



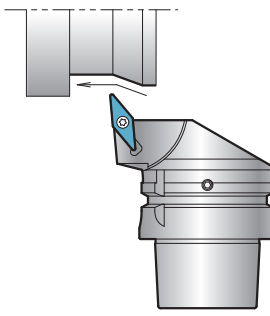
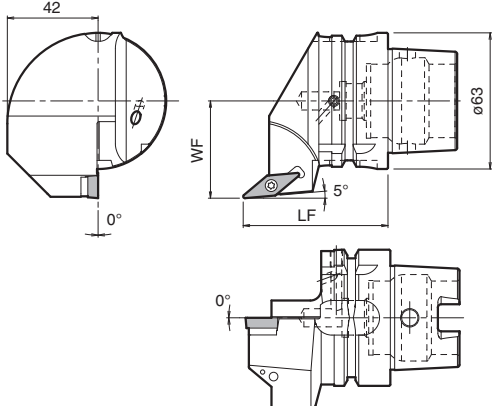
### Toolholder Dimensions

Description	Stock	Dimension (mm)		Spare Parts					
		LF	WF	Clamp Set	Shim	Shim Pin	Shim Nut	Wrench	Coolant Pipe
T63H- WWMNN-H08	●	100		WCS-8	WWN-42	WP5X15	WN-1	LW-3	CL63-1
WWMN- WWMNN-L08	●	140							



# Tools for Turning Mill (HSK-T)


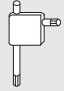
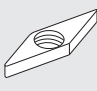
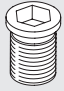

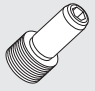
## SVLB (External / Copying)

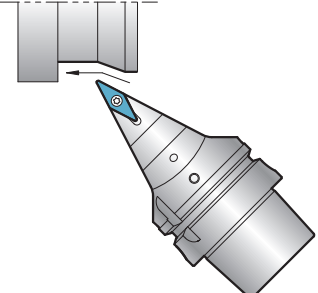
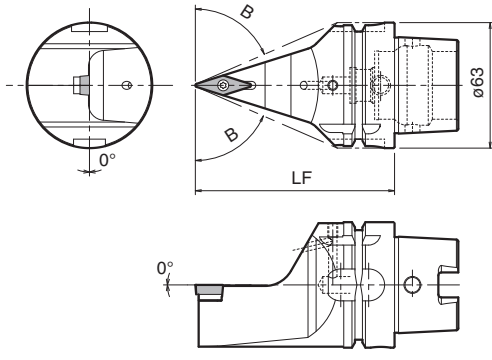
Applicable Inserts	
VB□T	
VBGW	1604..
VCGT	

● Right-hand shown

### Toolholder Dimensions


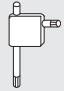
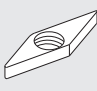
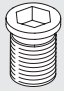

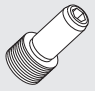
Description	Stock	Dimension (mm)		Spare Parts						
		LF	WF	Clamp Screw	Wrench	Shim	Shim Screw	Wrench (for Shim Screw)	Coolant Pipe	
										
T63H- SVLBR-DX16N	●	65	45	SB-40125TRN	FT-15	SVN-32N	SS-4N	LW-4	CL63-1	
SVLBL-DX16N	●									

## SVVB (External / Copying)

Applicable Inserts	
VB□T	
VBGW	1604..
VCGT	

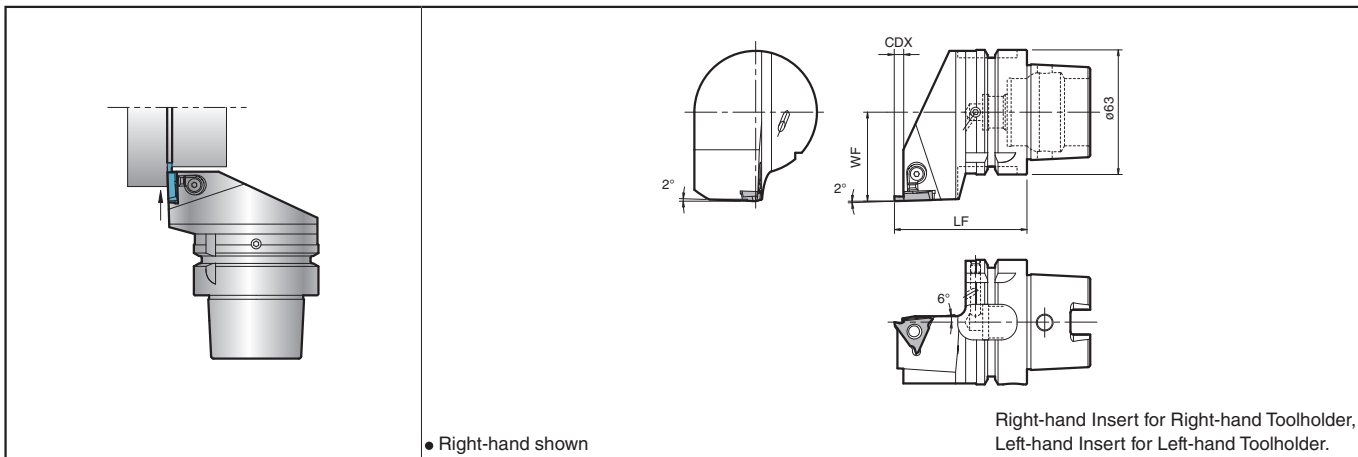
### Toolholder Dimensions

Description	Stock	Dimension (mm)		Spare Parts						
		LF	* B (°)	Clamp Screw	Wrench	Shim	Shim Screw	Wrench (for Shim Screw)	Coolant Pipe	
										
T63H- SVVBN-H16N	●	100	66.5	SB-40125TRN	FT-15	SVN-32N	SS-4N	LW-4	CL63-1	
SVVBN-L16N	●	140	72.5							

\* Angle B shows the interference angle from the line of cutting edge point and toolholder.

● : Std. Item

## KGBA (External Grooving)

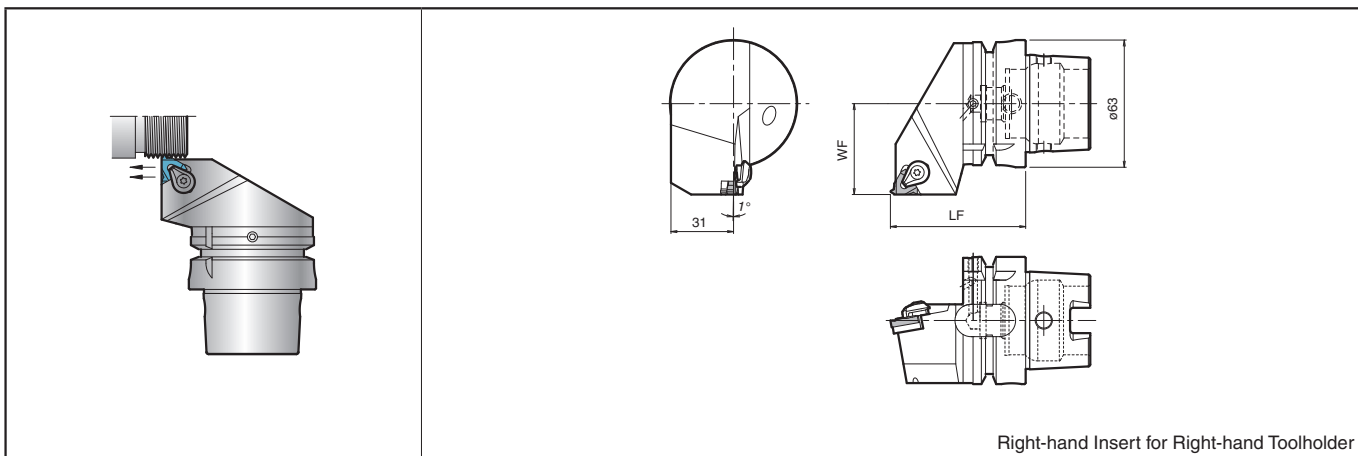


### Toolholder Dimensions

Description	Stock	Dimension (mm)			Spare Parts			Applicable Inserts ● G6-G8
		LF	WF	CDX	Clamp Set	Wrench	Coolant Pipe	
T63H- KGBAR-16 KGBAR-22-15 KGBAR-22-25 KGBAR-22-35	●	67	45	2.5	LGBA-16RS	FT-15	CL63-1	GBA32R Type
	●	67	45	4.0	LGBA-22RS			FT-15
	●			4.5		GBA32L Type		
	●			5.5			GBA43L Type	
T63H- KGBAL-16 KGBAL-22-15 KGBAL-22-25 KGBAL-22-35	●	67	45	2.5	LGBA-16LS	FT-15		CL63-1
	●	67	45	4.0	LGBA-22LS		FT-15	
	●			4.5		GBA32R Type		
	●			5.5				GBA43R Type

\* For details of applicable inserts, See Page G6-G8  
 · CDX shows the distance from the toolholder to the cutting edge.

## KTN (Threading)



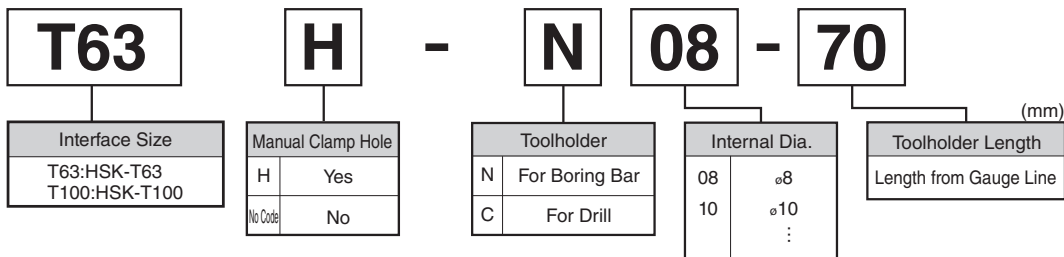
### Toolholder Dimensions

Description	Stock	Dimension (mm)		Spare Parts					Applicable Inserts ● J6, J8, J10, J12, J14, J16, J18
		LF	WF	Clamp Set	Wrench	Shim	Shim Screw	Coolant Pipe	
T63H- KTNR-16 KTNR-22	●	67	45	CPS-5S	FT-15	TN-32	SP3X8	CL63-1	16ER Type
	●			CPS-6S	LW-3	TN-43			22ER Type

\* For details of applicable inserts, See Page J6,J8,J12,J16,J18,J16,J18

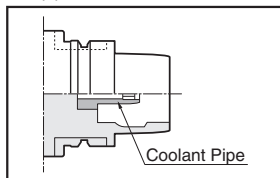
# Tools for Turning Mill (HSK-T)

## Identification System (For Boring Bar / Drill)

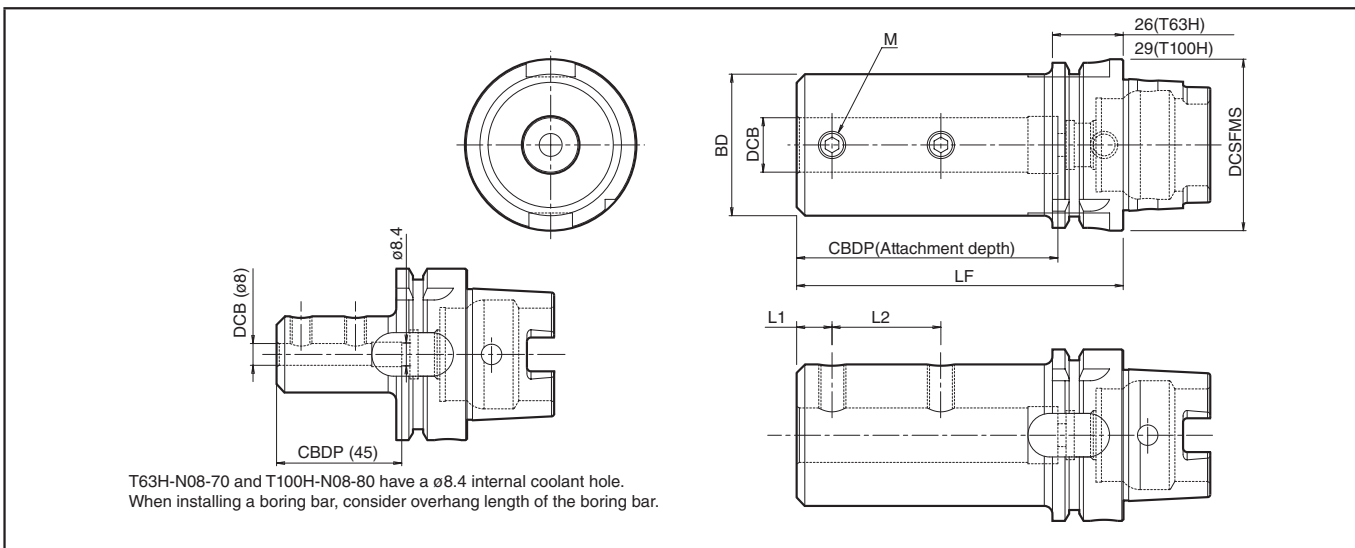


### Coolant Pipe

Coolant pipe is built into toolholder.



## Toolholder for Boring Bar / Drill



### Toolholder Dimensions

Description	Stock	Dimension (mm)									Spare Parts			Remarks
		DCB	DCSFMS	BD	LF	CBDP	L1	L2	M	Screw	Wrench	Coolant Pipe		
T63H- N08-70 N10-80 N12-90 N16-100 N20-120 N25-140 N32-160	●	8	63	28	70	45	9	20	M8	HS8X10	LW-4	CL63-1	For Boring Bar	
	●	10		35	80	55	9	22		HS8X12				
	●	12		42	90	65	9	22	M10	HS10X16	LW-5			
	●	16		48	100	75	11	30						
	●	20		52	120	95	13	40	M12	HS12X16 HS12X12	LW-6			
	●	25		56	140	115	13	50						
T63H- C20-75 C25-85 C32-90 C40-100	●	20	63	52	75	50	13	22	M10	HS10X16	LW-5	CL63-1	*For Drill	
	●	25		56	85	58	15	28	M12	HS12X16 HS12X12	LW-6			
	●	32		56	90	62	15	30	M16	HS16X12	LW-8			
	●	40		68	100	72	18	35						
T100H- N08-80 N10-90 N12-100 N16-110 N20-130 N25-150 N32-170	●	8	100	28	80	45	9	20	M8	HS8X10	LW-4	CL100-1	For Boring Bar	
	●	10		35	90	55	9	22		HS8X12				
	●	12		42	100	65	9	22	M10	HS10X16	LW-5			
	●	16		48	110	75	11	30						
	●	20		52	130	95	13	40	M12	HS12X18 HS12X20	LW-6			
	●	25		62	150	115	13	50						
	●	32		72	170	135	13	60	M16	HS16X18 HS16X20	LW-8			
●	40	82	105	72	15	25								
T100H- C20-85 C25-90 C32-95 C40-105	●	20	100	52	85	50	13	22	M10	HS10X16	LW-5	CL100-1	*For Drill	
	●	25		62	90	58	15	20	M16	HS16X18	LW-8			
	●	32		72	95	62	15	20						
	●	40		82	105	72	15	25						

\* Shorter than the toolholder for boring bar.

● : Std. Item

# Quick Change System of petal-shaped adapter

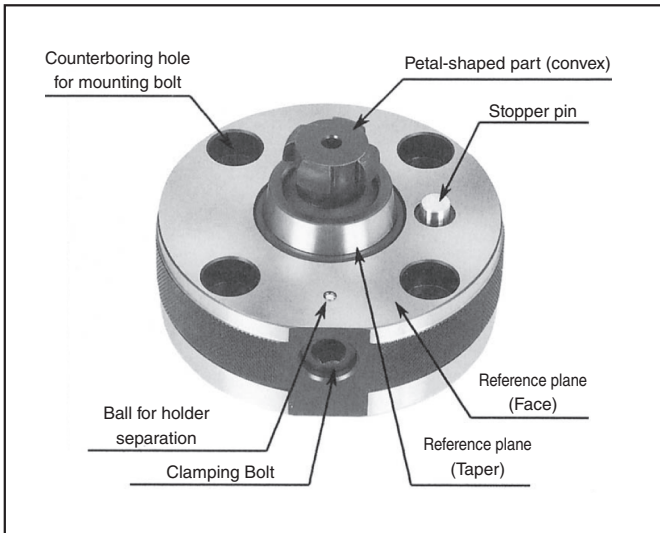
## KQC Series



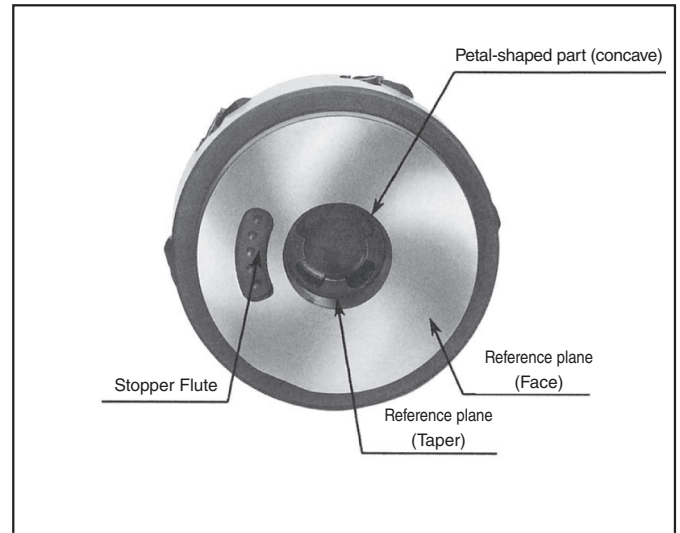
## Features

1. The way to assemble holder is turn the clumping bolt 1 round. Tool exchange time is less than 1 minute.
2. Junction of adapter and attachment touch both taper part and face part. And repeatability is less than 2 $\mu$ m.
3. Applicable to various tools.
  - . Boring tool (Rough & Fine)
  - . Face milling (Min.  $\phi$ 63, Max.  $\phi$ 160 is possible )
  - . Centering Tool
  - . External Turning
  - . Combination Tool
  - . Applicable to tools with coolant hole

## Clamping System



Adapter side



Attachment side

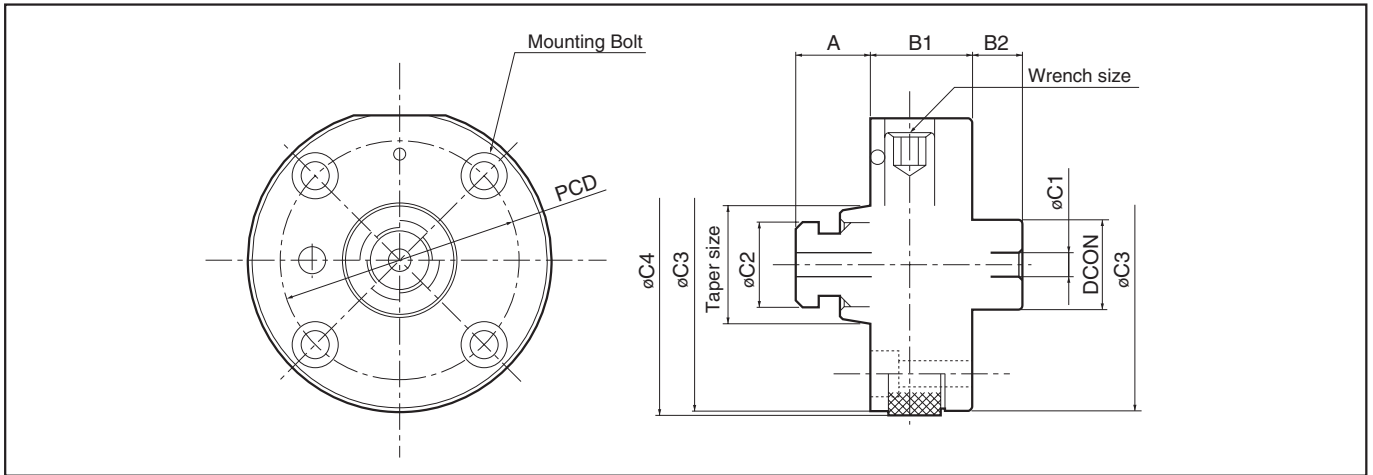
## How to use Clamping System

1. Combine petal-shaped part of adapter side with that of attachment side and insert the attachment.
2. Turn the attachment 45 degrees until stop (Clockwise direction).
3. Turn the clamp bolt attached to adapter side 1 round and tighten by Hexagon wrench.

Insert Grades	A
Turning Indexable Inserts	B
CBN & PCBN Tools	C
External	D
Small Parts Machining	E
Boring	F
Grooving	G
Cut-off	H
Threading	J
Drilling	K
Solid Tools	L
Milling	M
Tools for Turning Mill	N
Spare Parts	P
Technical Information	R
Index	T

# Quick Change System of petal-shaped adapter

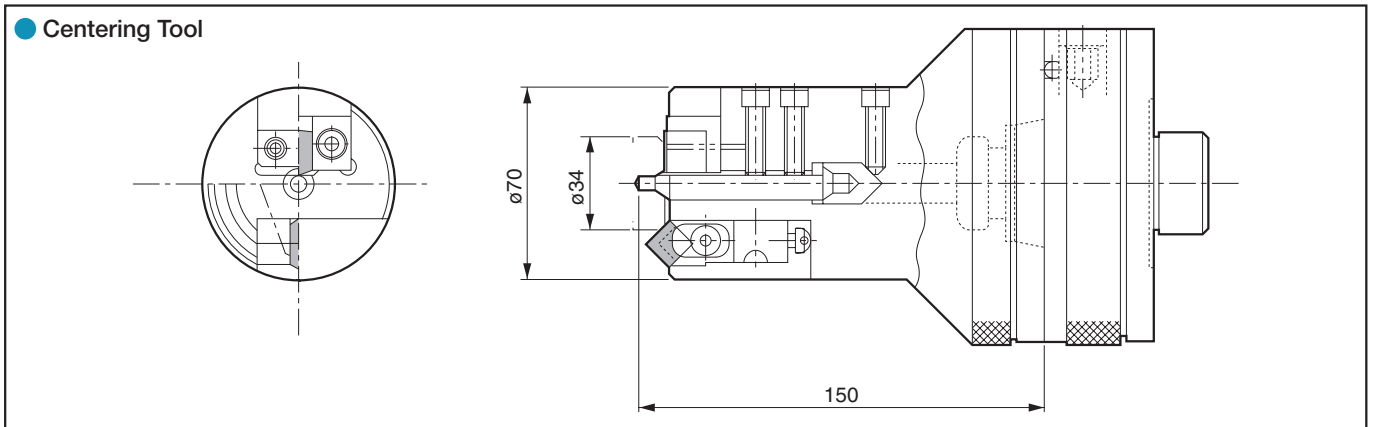
## Adapter



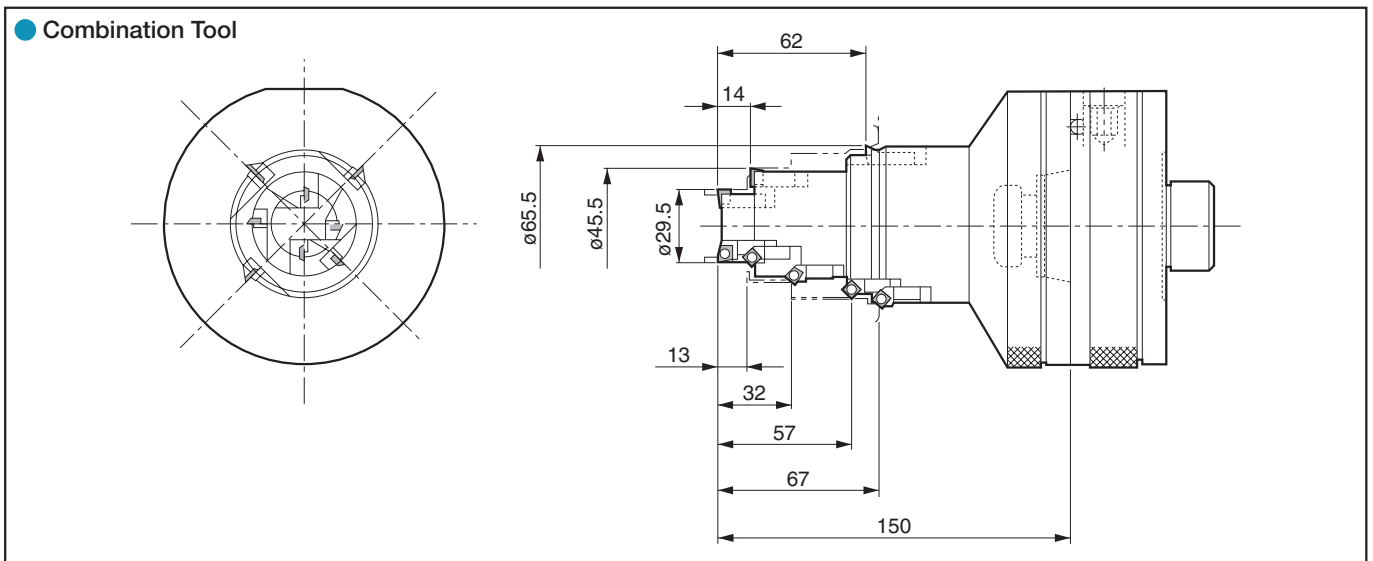
Description	Taper size	A	B1	B2	$\phi C1$	$\phi C2$	$\phi C3$	$\phi C4$	DCON	PCD	Wrench size	Mounting Bolt
<b>KQC28</b>	$\phi 28$	23	25 over	15 over	4	24	60 over	62 over	20	43 over	6	6 ~ 8
<b>KQC35</b>	$\phi 35$	27	30 over	15 over	6	28	75 over	77 over	25	54 over	8	8 ~ 10
<b>KQC45</b>	$\phi 45$	30	40 over	15 over	8	32	90 over	92 over	25	66 over	10	8 ~ 12
<b>KQC70</b>	$\phi 70$	33	50 over	15 over	10	40	130 over	132 over	25	100 over	12	10 ~ 16

## Toolholder (attachment) reference example

### Centering Tool



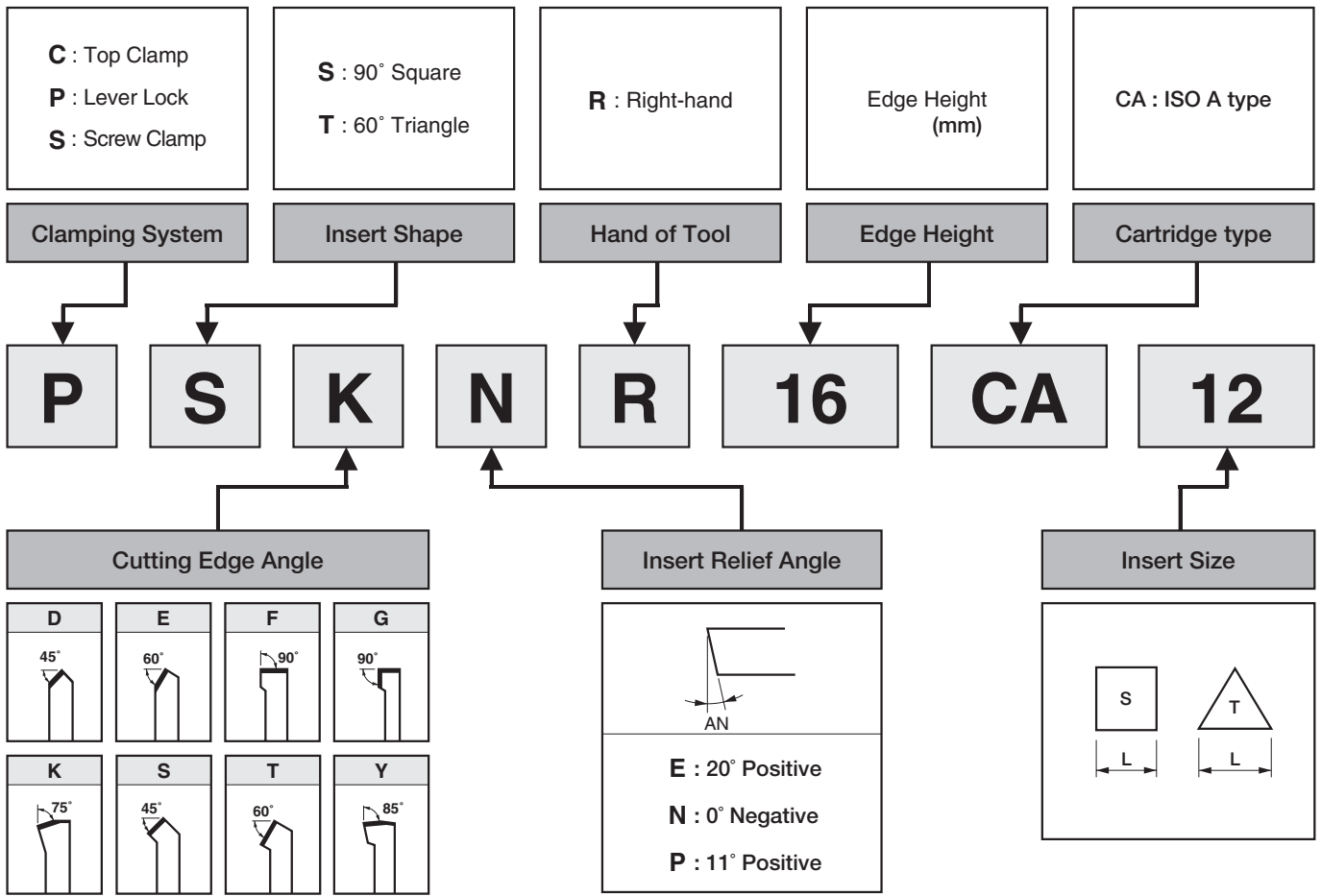
### Combination Tool



Applicable to various tooling (also with coolant hole)

# Cartridge

## Identification System (Square Shank)



· Specification may change without any prior notice.

## Clamping System

Series	Design	Features	Series	Design	Features
Top Clamp (C)		<ul style="list-style-type: none"> <li>· Rigid Clamping</li> <li>· Positive inserts</li> <li>· Low Cutting Force</li> </ul>	Lever Lock (P)		<ul style="list-style-type: none"> <li>· Easy Insert Replacement</li> <li>· General purpose</li> </ul>
Screw Clamp (S)		<ul style="list-style-type: none"> <li>· Simple Mechanism</li> <li>· Fewer Parts</li> <li>· Finishing to Medium Machining</li> </ul>			

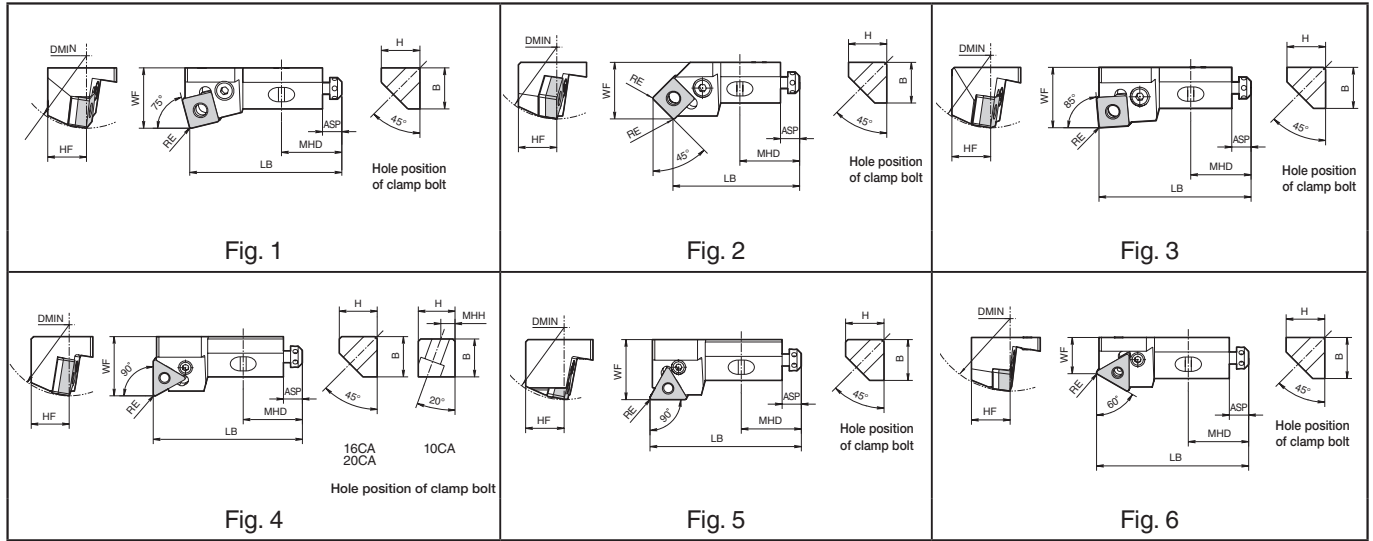
Insert Grades  
 Turnable Inserts  
 CN & PCD Tools  
 External  
 Small Parts  
 Boring  
 Grooving  
 Cut-off  
 Threading  
 Drilling  
 Solid Tools  
 Milling  
 Tools for Turning Mill  
 Spare Parts  
 Technical Information  
 Index

**A**  
**B**  
**C**  
**D**  
**E**  
**F**  
**G**  
**H**  
**J**  
**K**  
**L**  
**M**  
**N**  
**P**  
**R**  
**T**

# Cartridge

## Lever Lock

### Shape (Right-hand shown)



### Toolholder Dimensions

Description	Stock	Dimension (mm)								Std. Corner-R(RE)	Min. Bore Dia. DMIN (mm)	Drawing	Applicable Inserts	* See Page for Applicable Inserts	
		H	B	LB	MHD	ASP	MHH	HF	WF						
PSKNR 16CA12	MTO	16	17	63	25	8	-	16	25	0.8	60	Fig. 1	SN□A	B32 B35 B109 C10	
PSSNR 16CA12	MTO			53					15			Fig. 2	SN□G 1204..		
PSYNR 16CA12	MTO			63					25			Fig. 3	SN□M		
PTFNR 10CA11	MTO	12.5	11	50	20	8	5	10	14	0.4	40	Fig. 4	TN□A 1103..	B40 B42	
	16CA16	MTO	15.5	16	63	25	8	16	25				60		TN□A 1604..
	20CA22	MTO	20	19	70	30	10	20	25				70		TN□A 2204..
PTGNR 16CA16	MTO	16	17	63	25	8	-	16	25	0.8	60	Fig. 5	TN□G 1604..	B36 B43 B111 C10 C11 C23	
PTTNR 16CA16	MTO								15			70	Fig. 6		TN□M 1604..

\* See Page for Applicable Inserts (TN□G2204..., TN□M2204...) ➔ B36,B37,B38,B43

### Spare Parts

Description	Lever	Lock Screw	Shim	Shim Pin	Punch	Wrench	Radial adjustment screw	Axial adjustment screw	Wrench	Axial screw driver	Plate	Clamp Bolt	Wrench													
PSKNR 16CA12	LL-2N	LS-2N	LS-42	LSP-2	PC-2	LW-3	HS4X4	AJM5F	LW-2	SW-1.8	SM0816B SM1016B	HH8X25	LW-6													
PSSNR 16CA12																										
PSYNR 16CA12																										
PTFNR 10CA11	LL-03N	LS-03N	-	P-03	-	FH-2	HS4X4	AJM5F	LW-2	SW-1.8	SM0810A SM1010A	HH6X16	LW-5													
														16CA16	LL-1N	LS-1N	LT-32N	LSP-1	PC-1	FH-2.5	HS5X5	AJM6	LW-2.5	SM0816B SM1016B	HH8X25	LW-6
														20CA22	LL-2N	LS-2N	LT-42N	LSP-2	PC-2	LW-3	HS5X5	AJM6	LW-2.5	SM0820B SM1020B	HH8X30	LW-6
PTGNR 16CA16	LL-1N	LS-1N	LT-32N	LSP-1	PC-1	FH-2.5	-	-	-	-	-	-	-													
PTTNR 16CA16														SM0816B SM1016B	HH8X25	LW-6										

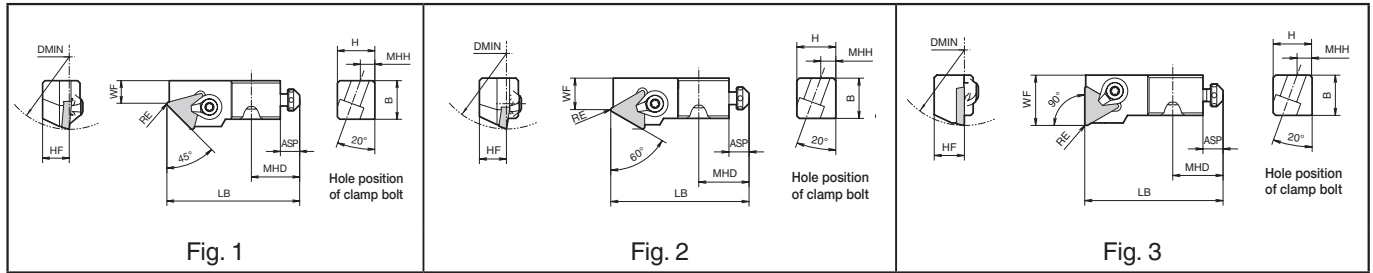
Note 1 : Plate is included with different two pieces one set of the size.

MTO : Made to order



## Top Clamp

### Shape (Right-hand shown)



### Toolholder Dimensions

Description	Stock	Dimension (mm)									Std. Corner-R(RE)	Min. Bore Dia. DMIN (mm)	Drawing	Applicable Inserts	See Page for Applicable Inserts
		H	B	LB	MHD	ASP	MHH	HF	WF						
<b>CTDPR</b>	<b>10CA11</b>	MTO	12.5	11	50	20	8	5	10	7	0.4	38	Fig. 1	1103..	<b>B87</b> <b>B88</b> <b>B113</b> <b>C18</b> <b>C29</b>
	<b>12CA16</b>	MTO	15.5	16	55			6	12	10	0.8	50		1603..	
<b>CTEPR</b>	<b>10CA11</b>	MTO	12.5	11	50			5	10	9	0.4	38	Fig. 2	TP□N 1103..	
	<b>12CA16</b>	MTO	15.5	16	55			6	12	13	0.8	50		TP□R 1603..	
<b>CTFPR</b>	<b>10CA11</b>	MTO	12.5	11	50			5	10	14	0.4	38	Fig. 3	1103..	
	<b>12CA16</b>	MTO	15.5	16	55			6	12	20	0.8	50		1603..	

### Spare Parts

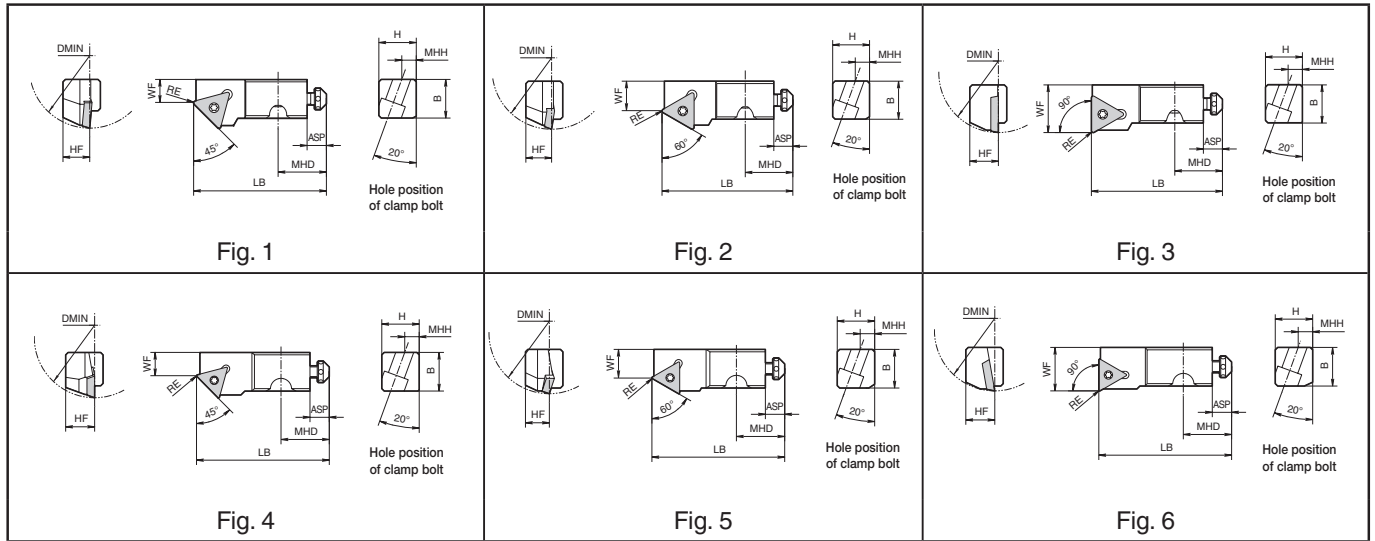
Description	Clamp Set	Wrench	Radial adjustment screw	Axial adjustment screw	Wrench	Axial screw driver	Plate	Clamp Bolt	Wrench			
<b>CTDPR</b>	<b>10CA11</b>	CPS-4V	FT-10	HS4X4	AJM5F	SW-1.8	SM0810A SM1010A	HH6X16	LW-5			
	<b>12CA16</b>	CPS-5V	FT-15	HS5X5						LW-2	SM0812A SM1012A	HH6X20
<b>CTEPR</b>	<b>10CA11</b>	CPS-4V	FT-10	HS4X4						LW-2	SM0810A SM1010A	HH6X16
	<b>12CA16</b>	CPS-5V	FT-15	HS5X5						LW-2.5	SM0810A SM1010A	HH6X20
<b>CTFPR</b>	<b>10CA11</b>	CPS-4V	FT-10	HS4X4						LW-2	SM0810A SM1010A	HH6X16
	<b>12CA16</b>	CPS-5V	FT-15	HS5X5						LW-2.5	SM0812A SM1012A	HH6X20

Note 1 : Plate is included with different two pieces one set of the size.

# Cartridge

## Screw Clamp

### Shape (Right-hand shown)



### Toolholder Dimensions

Description	Stock	Dimension (mm)									Std. Corner-R(RE)	Min. Bore Dia. DMIN (mm)	Drawing	Applicable Inserts	See Page for Applicable Inserts
		H	B	LB	MHD	ASP	MHH	HF	WF						
STDPR 10CA11	MTO	12.5	11	50	20	8	5	10	7	0.4	38	Fig. 1	TP □ H TP □ T TPGB	1103.. 1603.. 1103.. 1603.. 1103.. 1603..	B80 ι B86 C16 C26 ι C28
	MTO	15.5	16	55			6	12	10	0.8	50				
STEPR 10CA11	MTO	12.5	11	50			5	10	9	0.4	38	Fig. 2			
	MTO	15.5	16	55			6	12	13	0.8	50				
STFPR 10CA11	MTO	12.5	11	50			5	10	14	0.4	38	Fig. 3			
	MTO	15.5	16	55			6	12	20	0.8	50				
STDER 12CA13	MTO	15.5	16	55	20	8	6	12	10	0.4	50	Fig. 4	TEGW 1303..	-	
STEER 12CA13	MTO								12			Fig. 5			
STFER 12CA13	MTO								18			Fig. 6			

### Spare Parts

Description	Clamp Screw	Wrench	Radial adjustment screw	Axial adjustment screw	Wrench	Axial screw driver	Plate	Clamp Bolt	Wrench
STDPR 10CA11	SB-3TR	FT-10	HS4X4	AJM5F	LW-2	SW-1.8	SM0810A SM1010A	HH6X16	LW-5
12CA16	SB-4TR	FT-15	HS5X5		LW-2.5		SM0812A SM1012A	HH6X20	
STEPR 10CA11	SB-3TR	FT-10	HS4X4		LW-2		SM0810A SM1010A	HH6X16	
12CA16	SB-4TR	FT-15	HS5X5		LW-2.5		SM0812A SM1012A	HH6X20	
STFPR 10CA11	SB-3TR	FT-10	HS4X4		LW-2		SM0810A SM1010A	HH6X16	
12CA16	SB-4TR	FT-15	HS5X5		LW-2.5		SM0812A SM1012A	HH6X20	
STDER 12CA13	SB-3080TR	FT-10	HS4X4	AJM5F	LW-2	SW-1.8	SM0812A SM1012A	HH6X20	LW-5
STEER 12CA13									
STFER 12CA13									

Note 1 : Plate is included with different two pieces one set of the size.

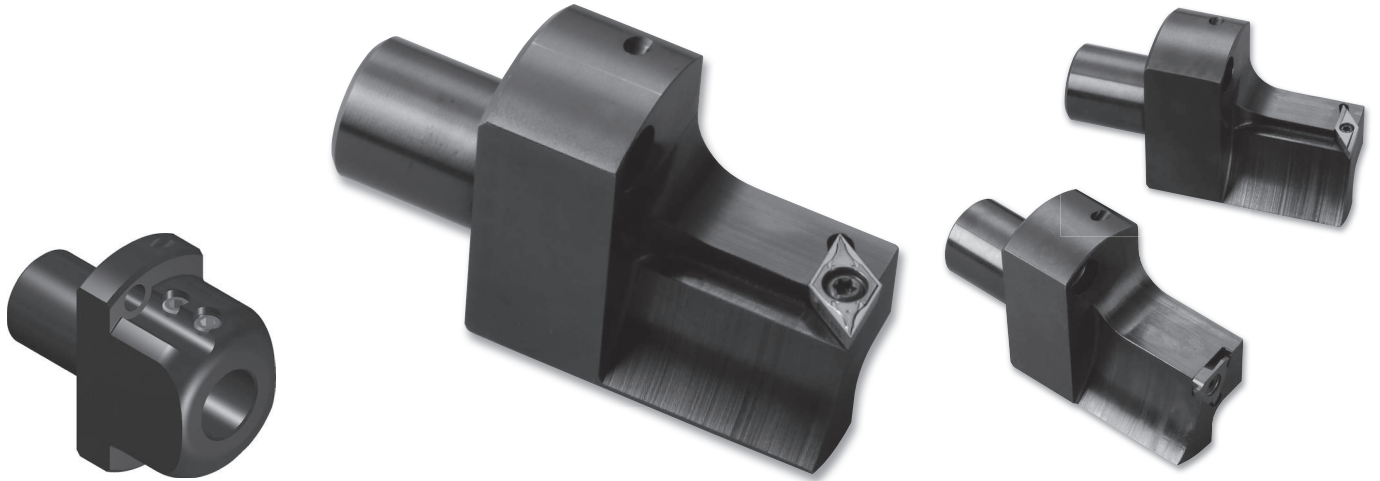
MTO : Made to order

# Flange holder

For Star Micronics exclusive use Back Facing Holder

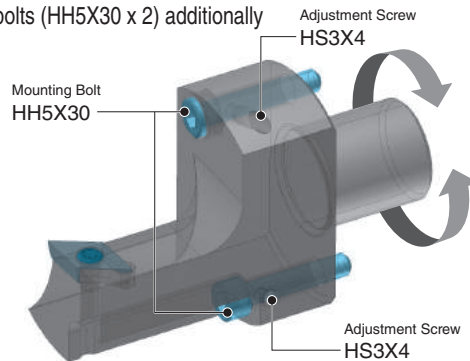
# Flange Holder

Back Facing Holder with Center Height Adjustment Function (Height adjustment approx.  $\pm 0.1\text{mm}$ )

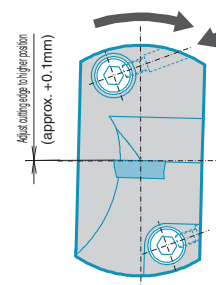


## Flange Holder Center Height Adjustment

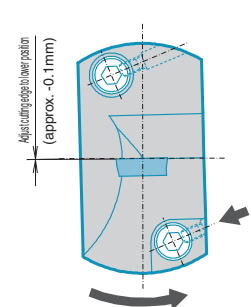
- (1) Mount  $\varnothing 22$  shank to toolpost
- (2) Tighten the holder by the mounting bolts (HH5X30 x 2) temporary
- (3) Adjust center height by the adjustment screw (HS3X4)
  - A: Tighten the adjustment screw on the top of holder  
 $\Rightarrow$  Adjust cutting edge to higher position (approx.  $+0.1\text{mm}$ )
  - B: Tighten the adjustment screw on the bottom of holder  
 $\Rightarrow$  Adjust cutting edge to lower position (approx.  $-0.1\text{mm}$ )
- (4) Tighten the holder by the mounting bolts (HH5X30 x 2) additionally



A : Tighten the adjustment screw on the top of holder



B : Tighten the adjustment screw on the bottom of holder



## Compatible Machines with the Flange Holders

ECAS-20, SB-16(D/E), SB-12IIIE, SB-16IIIE, SB-20E, SB-20R TYPE-N, SR-20RII, SR-20RIII, SR-20RIV, SW-20, SR-25J/32J

Note 1) SR-20RIV, SW-20 have the limitation for install position. Attaching both on the top and bottom is impossible. It is necessary additional modifications on the plug cover.

Note 2) Cautions

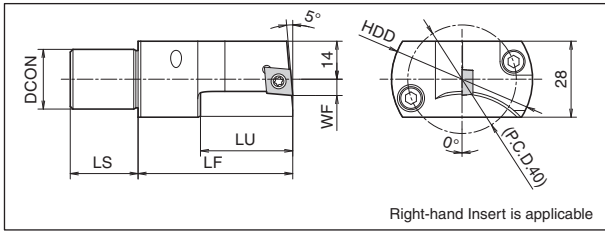
- (1) Avoid interfere with other tools
- (2) Special chuck may be required for some workpieces.
- (3) Limitation of stroke at the machine (soft limit) may required
- (4) Shorter wrench is necessary when using close to the machine.

Insert Grades	A
Turning	B
Indexable Inserts	C
CNC & PCO Tools	D
External	E
Small Parts Machining	F
Boring	G
Grooving	H
Cut-off	I
Threading	J
Drilling	K
Solid Tools	L
Milling	M
Tools for Turning Mill	N
Spare Parts	P
Technical Information	R
Index	T

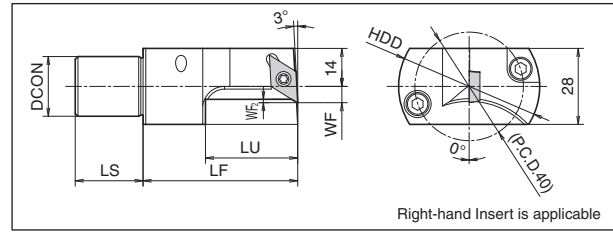
# Flange holder

## Flange holder

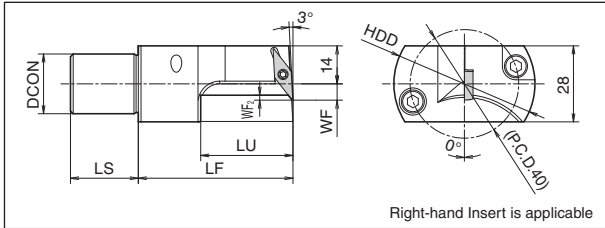
**SF22F-SCLC** (External / Facing) Applicable Inserts : CC...09...



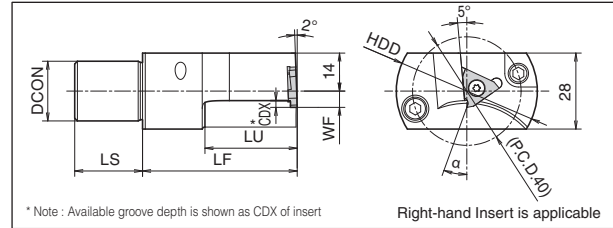
**SF22F-SDUC** (External / Facing) Applicable Inserts : DC...11...



**SF22F-SVUB** (External / Undercutting) Applicable Inserts : VB...11...

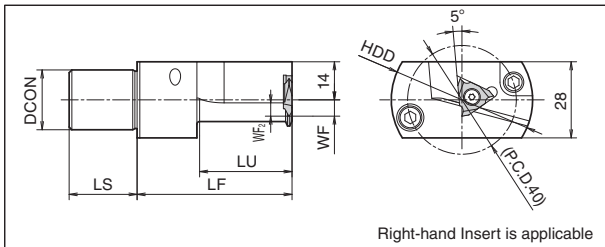


**SF22F-KTGF** (External Shallow Grooving) Applicable Inserts : TGF32R...



\* Note : Available groove depth is shown as CDX of insert

**SF22F-KTTX** (External Threading) Applicable Inserts : TTX32R...

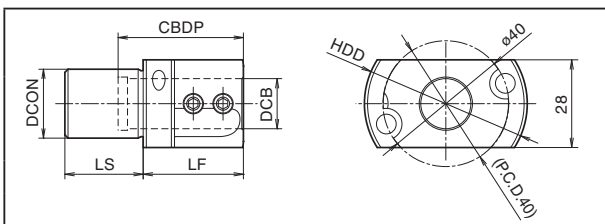


$\alpha$	Insert Grades
20°	PR1115, PR1215 PR930, KW10
11°	KPD001
6°	TC40N

## Toolholder Dimensions

Description	Stock	Dimension (mm)							Std. Corner-R(RE)	Spare Parts					
		DCON	HDD	LF	LS	LU	WF	WF <sub>2</sub> CDX		Screw	Wrench	Mounting Bolt	Wrench	Adjustment Screw	Wrench
SF22F-SCLCL09-40P	●							-	0.2	SB-4085TR	FT-15				
SF22F-SDUCL11-40P	●							1.5	0.2						
SF22F-SVUBL11-40P	●	22	52	57	25	34	6	3	0.2	SB-2570TR	FT-8	HH5X30	LW-4	HS3X4	LW-1.5
SF22F-KTGFL16-40P	●							2.5	-	SB-4070TRS	FT-10				
SF22F-KTTXL16-40P	●							4	-	SB-4070TRW	FT-8				

## Flange holder (Sleeve Type)



Description	Stock	Dimension (mm)					
		DCON	HDD	DCB	LF	LS	CBDP
SF22F-SH16-40P	●	22	52	16	32	25	40
SF22F-SH20-40P	●			20	48		43

## Spare Parts

Mounting Bolt	Wrench	Adjustment Screw	Wrench	Screw (For fixing toolholder)	Wrench
HH5X30	LW-4	HS3X4	LW-1.5	HS6X4P	LW-3

● : Std. Item